

STAY & PLAY AT TUCSON'S FAVORITE 55+ RESORT

JANUARY  
2025



# The West Villager

4555 S. Mission Rd., Tucson, AZ 85746

520-889-6900

[www.RinconCountry.com](http://www.RinconCountry.com)

## HIGHLIGHTS

Jan 10 - Concert Gold Dust Women  
Jan 24 - Concert William Florian  
Jan 31 - Live Looping with Jason  
'Gordo' Gordon

## Planning Ahead

Jan 22 - Deadline to sign up for CHARTER to  
Duttons Family Theater  
Feb 28th - Murder Mystery & Dinner  
Event Tickets available in Activity Office

## NEW 'campersApp' for Activities

When you are on the move and don't  
have access to your printed  
activity schedule download  
campersApp (FREE)



**CHARTER** *Family* **THEATER**  
**Sat, Feb 8th, 8:15 AM**  
Deadline to purchase tickets Jan 22nd Sign up at Activity Office

2025 RCW ENTERTAINMENT SERIES

2025 RCW ENTERTAINMENT SERIES

JASON "GORDO" GORDON





# Highlights

Rincon Country West




**Pancake Breakfast**  
Jan 4 & 18  
Saturday  
7AM to 9AM  
AUDITORIUM  
BY THE WOODSHOP



**BRING IT ON!**  
MONDAY & TUESDAY JAN 6 - 7, 2025  
**SENIOR OLYMPIC SHUFFLEBOARD**



**ACTIVITY EXPO 2025**  
**MEET THE CLUBS**  
6:00 PM THURSDAY  
9 JANUARY 2025  
AUDITORIUM & REC HALL



@ COFFEE  
**FRIDAY JAN 10**  
9:00 AM  
AUDITORIUM



**ICE CREAM SOCIAL**  
THURSDAY, JAN 16TH  
6PM TO 7PM  
BY SHUFFLEBOARD  
REC HALL & COURT YARD  
**MUSIC**



U.S. Customs and Border Protection  
**PRESENTATION**  
**FRIDAY JAN 17**  
10:00 AM  
AUDITORIUM



**SPUD OUT**  
5:00PM  
Auditorium  
**JAN 18 SATURDAY**  
BY THE GARDEN RAILROAD

**TUESDAY**  
**JAN 21** **FEBRUARY**  
ACTIVITIES  
TICKET  
SALES  
LIST



**Buttons Charter**  
**FAMILY THEATER**  
**SAT Feb 8th**  
Deadline to purchase tickets  
Jan 22nd



**the loop**  
**PRESENTATION**  
**FRIDAY JAN 24**  
10:30 AM  
AUDITORIUM



2025 RCW ENTERTAINMENT SERIES  
**WILLIAM FLORIAN**  
**JAN 24**  
FRIDAY  
AUDITORIUM



**GIVEAWAY Time**  
**CABARET CAFE**  
**SATURDAY JAN 25**  
1:30PM  
AUDITORIUM



**Root Beer Float Day**  
**THUR JAN 30TH**  
6PM TO 7PM  
REC HALL  
BY SHUFFLEBOARD



**JASON "GORDO" GORDON**  
**Live Looping**  
**FRIDAY JAN 31ST** AUDITORIUM



**Buttons Charter**  
**FAMILY THEATER**  
**SAT Feb 8th**  
Deadline to purchase tickets  
Jan 22nd



**MURDER MYSTERY & DINNER**  
**DEATH IS A GAMESTER**  
**FRIDAY FEB 28TH**  
5:00 PM  
AUDITORIUM

## December 2, 2024 Blood Drive - THANK YOU

Thank you to our 32 donors who donated 18 units of blood. This blood will go on to impact the lives of 40 hospital patients here in Arizona. We cannot thank you enough. The next blood drive is on February 5, 2025. Please sign up in the Activity Office for the February 5th blood drive.



# Shuttles

Rincon Country West

**NEW**

**SHUTTLE & DINNER**



Sign up at Activity Office

**Saturday  
Jan 4th  
4:00 PM**



**NEW**

**SHUTTLE**

**Beer Tasting & Dinner**

Sign up at Activity Office



**Tue, Jan 7th  
3:00pm**

**NEW**

**SHUTTLE**

**Second Hand Stores**

**THURSDAY  
JAN 9**

**10:00 AM**

Sign up at Activity Office



**NEW**

**SHUTTLE**

**BIOSPHERE 2  
TUESDAY  
JAN 14**

**9:00 AM**

Sign up at Activity Office



Hours: M - F 9am to 4pm | Closed for Lunch Noon to 1pm

**NEW SHUTTLE**

**Thursday  
January 16  
3:00 PM**

Sign up at Activity Office

**Beer Tasting & Dinner**

**NEW SHUTTLE**

**Monday  
February 17, 9:00 AM**

**Lunch @ Montgomery's**

**Deadline to purchase tickets Jan 16th**

Sign up at Activity Office



**NEW SHUTTLE**

*Wine Bar Tour*

**Sat, Jan 18  
3:00 PM**

Sign up at Activity Office



**NEW SHUTTLE**

**Tohono Chul**  
GARDENS • GALLERIES • BISTRO

**TUE, JAN 21 | 9:30 AM**

Sign up at Activity Office





## SHUTTLE REMINDER

### Franklin Auto Museum

THURSDAY, JAN 23

9:30 AM departure



## NEW SHUTTLE



VS



SAT, JAN 25, 5:30pm

Sign up at Activity Office



## SHUTTLE Tue, Jan 28th, 10:00 AM

Sign up at Activity Office

## NEW

## ARTS AMERICAN INDIAN EXPOSITION

## SHUTTLE



## Thur, Jan 30th, 10:00 AM

Hours: M - F 9am to 4pm | Closed for Lunch Noon to 1pm

# Rentals

Rincon Country West



**XPREMIUM  
STEP-THRU**

## EBIKE RENTALS

HELMET RENTAL  
DAILY \$5  
WEEKLY \$20



**2024-2025 Season**

**DAILY \$35  
WEEKLY \$140**

RENTALS Available through the  
**Activity Office**

**Monday -  
Friday  
9am - 3:30pm**



**XPEAK STEP-THRU**



## GOLF CART RENTALS

RENTALS Available through the  
**Activity Office**

**Monday - Friday  
9am - 3:30pm**

**DAILY \$55  
WEEKLY \$210  
MONTHLY \$525**



**2024-2025 Season**



**Christmas 2  
Site 0  
Decorating 2  
Contest 4**

## Winners

*Best Decorated RV  
#68 Doug & Stacey Hicks*

*Best Decorated Park Model  
#490 Mike & Lori Jones*

*Best Street Display  
'G' Street*



Site: 68



Site: 490



'G' Street



*Santa landed at Rincon*





# Safety First!

## *I'm OK*

Here at RCW we want to make sure you are A-OK! The "I'm Okay Club" is a program for guests and residents who are living alone.

Once you sign up with the Activity Office, you must call in daily before 10:00AM. This is just a daily check-in by phone that allows us to make sure you are OK. If you don't call in by 10:00AM, we will try and reach you. If we are unsuccessful, we will come to your house and check on you.

Please stop by the Activity Office during the season or the Main Office during the summer to sign up. We look forward to hearing from you.

Concerned about a neighbor? Call the Activity Office and we will reach out.



## *Speed Limit*

Please observe the 10-mph speed limit inside the park.

*Only you can prevent speed bumps.*

## *AED Devices*



We have four (4) Automated External Defibrillator (AED) devices. Make it a point to learn their locations. There is one in the Breezeway near the Auditorium, D street Laundry, Rally Room, and Pickleball/Tennis courts.

## *Wifi HotSpots @ Rincon West*



Network / Hotspot	PW
RCW Auditorium	None
RCW Billiard Room	None
RCW CardRoom	None
RCW Classroom 2	None
RCW Coffee Room	None
RCW Exercise Room	None
RCW Extended Network	None
RCW Office	None
RCW Pool	None
Rincon-Guest	beattheheat

## *Safety and Wildlife*



For maximum safety, carry a flashlight when you are walking at night, keep pets on a leash, and remain alert to an unlikely, but possible encounter.

## *Avoid Heat Related Illness*

Drink water - at least 2 liters (8 cups) of water per day.

Dress properly - lightweight, light colored clothing, wear a hat or carry an umbrella. Apply sunscreen to exposed skin.

Take it easy - avoid strenuous activity. If you must, do it in the morning between 4:00AM to 7:00AM (summer time). Take breaks in a cool place if possible.



## *Mail Room*

### HOURS

Mon - Sat  
Noon - 3:00pm



### *Mailing Address Example only*

Your Name

4555 S Mission Rd #559, Tucson, AZ 85746

## *Get Text Alerts from Rincon Country!*

Sign up to receive text alerts from the Rincon Country office. Send RCWalerts to 41372. This will be strictly **used for utility outages and emergencies** and you can opt out at any time.

Hours: M - F 9am to 4pm | Closed for Lunch Noon to 1pm

## For Club Leaders "The Villager" Submissions

Club and Group leaders, if you wish to promote your club's activities in the upcoming issue of "The Villager", the submission deadline is the 1st of each month. You may submit your articles at any time between now and then. Remember to include times, dates, room locations, contact names, and phone numbers in your articles.

You may email your articles to - [marletta@rinconcountry.com](mailto:marletta@rinconcountry.com)

Submission Guidelines: Do NOT **bold**, underline, or use all CAPITALS in your articles, and keep articles to 150 words or less. Submit one for each month.

Hats off to all "The Villager" contributors for your fun and informative articles last season. Your efforts are greatly appreciated by all residents who look forward to reading the newsletter each month. Your 2024-2025 fans await!



## Bulletin Boards

The bulletin boards located in front of the Main Office, next to Multipurpose and Rec Hall rooms are used for club schedules and communication from the Activity Office. If you or your club would like to post something on these boards, it must be approved by the Activity Office.

## Digital Billboard and Channel 2 (Rincon TV)

Located outside the Auditorium, in the Main Office, and Activity Office. Available to the Clubs to promote your events. Let the Activity Office know what you would like show the world.

## Friday Coffee Slide Show

Items can be in the Friday Coffee slide show for the upcoming week. Slideshow deadlines are each Monday and can be submitted to [marletta@rinconcountry.com](mailto:marletta@rinconcountry.com) or on the form in the Activity Office.

## Club and Activity Guidebook

Available to all residents December in the Activity Office. This guide will have details about all current clubs and contact information. If there are changes please notify the Activities Office.

## campersApp - Never Miss the Fun

**FREE** download and use.

This App is great when you are on the move. It will give you everything you need in one place, so you don't miss out on the fun activities planned during your stay. Scan the QR code with your phone or go to your phone's Apple App Store or your Android Google Play to locate and download the App. 'How To' instructions are available in the office.



**campers**  **APP**





## Pima County Food Bank

Rincon Country West supports the Pima County Food Bank. Please note there is a bench with a lift-up lid in front of the Main Office. Any extra non-perishable food items you may have can be put inside this bench. We regularly contact the Food Bank to stop by and pick up the items. This makes it handy for when you clean out those kitchen cupboards and you want to donate to a good cause!

### RCW Food Events

#### BYOS "Green" Initiative

In an effort to reduce waste please be advised that unless otherwise noted, ALL breakfasts, lunches, dinners, and other food events sponsored by RCW are "BYOS." This means "bring your own service" - plate, fork, etc. Together, let's work together to reduce the volume of disposable waste that ends up in landfills.



#### BINGO

Practice your loudest "B-I-N-G-O" yell and bring your lucky charms. You could be the next big jackpot winner! Doors open 6pm. Ticket sales start 6:15pm. Ticket sales end 6:50 pm. Bingo will begin promptly at 7:00 pm. We will

have fresh popcorn, coffee, soda, candy, cookies, and daubers. The concession stand opens at 6:30 pm. Unable to accept \$50s and \$100s.



#### Be the first to get your Newsletter!

By subscribing to a paperless Villager, you will see the newsletter before it is printed,

save 20-40 sheets of paper each month, and have access to RCW news from afar. Simply fill out the Paperless RCW Villager Newsletter Form to receive the Villager Newsletter via email.

*Go Green...Go Paperless!*

#### Shuttle & Charter Refund Policy

Always keep your receipts from the Activity Office. Refunds can only be given with a receipt. Shuttle trips - No refunds or cancellations within seven (7) days of shuttle departure. Each refund will be reviewed on a case-by-case basis. A minimum of six (6) reserved seats per trip are needed. Charter bus trip cancellations require a three (3) week notice for refund.

### Never miss the fun

Find us on campersAPP



#### STEP 1:

Download campersAPP



#### STEP 2:

Click on our map pin or enter login code:

**rincon**

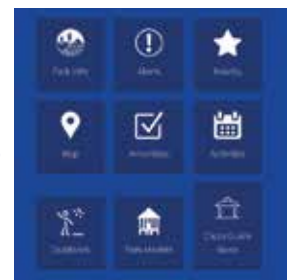
Park information  
Activities schedule  
Real-time alerts  
Resort map  
AR scavenger hunts  
& MORE!



### Activities at Your Fingertips!

Thank you for responding to the Spring survey. As a result of the survey and from our club leader meeting, we have a new tool for you to keep up to date on all the things that are happening at the resort.

You'll be able to access Park Info, Alerts, Nearby (Attractions, Dining, Shopping & Services), Resort Map, Amenities, Activities, Outdoor (Biking, Fishing, Water, and Hiking), and Park Models for Sale.



There are sections that we could use your help completing or expanding upon.

'Outdoors' - please let us know your suggestions. This section covers biking, fishing, water, and hiking.

'Nearby' - we could use some help especially in Dining and Shopping. Contact the Activity Office with suggestions. Thank you!

Hours: M - F 9am to 4pm | Closed for Lunch Noon to 1pm

# Month at a Glance

## JANUARY 2025

---

**Wed Jan 1, 2025**

**Activity Office Closed All Day**

**Thu Jan 2, 2025**

**No Farmers Market Today**

**Fri Jan 3, 2025**

**8:30 am No Friday Coffee and Donut Program**

**Sat Jan 4, 2025**

**7:00 am Pancake Breakfast**

**4:00 pm SHUTTLE - Dinner & ZooLights  
Holiday Magic 2024 at Reid Park**

**Mon Jan 6, 2025**

**9:00 am Senior Olympics Festival -  
Shuffleboard**

**Tue Jan 7, 2025**

**9:00 am Senior Olympics Festival -  
Shuffleboard**

**3:00 pm SHUTTLE - Beer Tasting**

**6:15 pm BINGO! (7:00 PM)**

**Thu Jan 9, 2025**

**10:00 am Farmers Market**

**10:00 am SHUTTLE: 2nd Hand Stores**

**6:00 pm Activity Expo**

**Fri Jan 10, 2025**

**8:30 am Friday Coffee and Donut Program**

**7pm SERIES - Gold Dust Women**

**Tue Jan 14, 2025**

**9:00 am SHUTTLE - Biosphere 2 Tour**

**6:15 pm BINGO! (7:00 PM)**

**Thu Jan 16, 2025**

**10:00 am Farmers Market**

**3:00 pm SHUTTLE - Beer Tasting**

**6:00 pm Ice Cream Social**

**February Activity Ticket Sales in mailbox**

**Fri Jan 17, 2025**

**8:30 am Friday Coffee and Donut Program**

**7:00 pm Mariachi Aztlán de Pueblo Band**

**Sat Jan 18, 2025**

**7:00 am Pancake Breakfast**

**3:00 pm SHUTTLE - Wine Bar Tour**

**5:00 pm SPUD OUT**

**Tue Jan 21, 2025**

**9:30 am SHUTTLE - Tohono Chul Gardens &  
Galleries**

**6:15 pm BINGO! (7:00 PM)**

**February Ticket Tuesday Sales (drop off)**

**Wed Jan 22, 2025**

**Deadline CHARTER - Dutton's (sign up)**

**Thu Jan 23, 2025**

**9:30 am SHUTTLE - Franklin Auto Museum &  
Lunch**

**10:00 am Farmers Market**

**Fri Jan 24, 2025**

**8:30 am Friday Coffee and Donut Program**

**10:30 am Huckelberry Loop**

**7:00 pm SERIES - William Florian - Beatles**

**Sat Jan 25, 2025**

**7:00 am Walk Around Sale**

**1:30 pm Cabaret Cafe**

**5:30 pm SHUTTLE - Hockey game:  
Roadrunners vs. Abbotsford Canucks**

**Tue Jan 28, 2025**

**10am SHUTTLE - Pima Air & Space Museum**

**6:15 pm BINGO! (7:00 PM)**

**Thu Jan 30, 2025**

**10:00 am SHUTTLE -  
American Indian Arts Exposition**

**6:00 pm Root Beer Float**

**Fri Jan 31, 2025**

**8:30 am Friday Coffee and Donut Program**

**10:00 am S. AZ Hiking Club presentation**

**7:00 pm Concert - Jason Gordon 'Live Looping'**



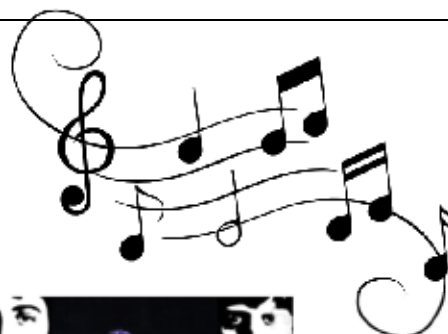
# THE 2025 RCW ENTERTAINMENT SERIES

This 2025 RCW Entertainment Series consists of the six (6) shows and will be held on Friday evenings in the RCW Auditorium at 7:00 p.m. The Entertainment Series Ticket bundles are sold out. *\*put your name on the wait list.* General Admission tickets will go on sale 'Ticket Tuesday' prior to the event(s).  
**Please stop by Activity Office to pick up your Series Badges.**

---



Stevie Nicks, Linda Ronstadt, Carly Simon, and Joni Mitchell



**JANUARY 24TH**

**William Florian**

*Beatles Acoustic Sing-Along*



**FEBRUARY 7th**

**Kenny Hess**

*The Songs That Wrote Country Music*



**FEBRUARY 21st**

**MARIO  
CARBONI**

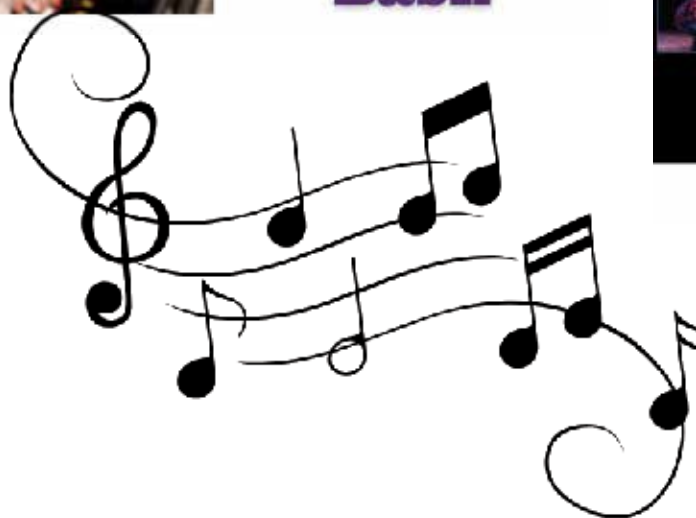


**MARCH 7th**

**Bourbon  
Street  
Bash**



**MARCH 28th**



# GIVEAWAY



## Time

# CABARET CAFE

COURTESY OF JUDY'S PARK MODEL SALES

Join us on January 25th, from 1:30 PM to 3:30 PM, at the RCW Auditorium for an afternoon of appreciation at the 'Cabaret Cafe', courtesy of Judy's Park Model Sales. Snacks will be provided, and guests are encouraged to bring their own beverages.

Enjoy a captivating performance by The Hags of Tucson, also featuring local singers, dancers, and playful antics. You'll also have the chance to win a 55" Smart TV, one of three \$100 bills, one of four \$50 bills, or one of several gift cards from local businesses.



It's a wonderful opportunity to spend a Saturday afternoon! The Auditorium will feature round tables, so remember to **collect your complimentary ticket from the Activity Office** soon. **This event is purely for enjoyment**; there's no time-share presentation or car purchase required. Keep your keys, come and go as you wish, but you must be present to win. This Appreciation event by Judy's Park Models is set to be extraordinary —bigger, better, faster and prettier than ever!

**BIGGER, BETTER, FASTER AND PRETTIER THAN EVER!**

**JAN 25, 2025**



**AUDITORIUM**



**SATURDAY**



**FRIDAY | FEB 28 | AUDITORIUM**

**& DINNER**

**MENU Buffet Style:**

Prime Rib Carving Station w/Creamy Horseradish (GF) - Scalloped Potatoes (GF) - Honey & Brown Sugar Roasted Carrots (GF) - Hawaiian Rolls w/Butter \* - Fresh Baked Brownie & Cookie Platter \*

SUBSTITUTIONS • Vegetarian: black bean burger • \*GF: bread and a brownie

**Tickets: \$50/pp Limited seating Tickets on Sale in Activity Office**

**Please advise Regular, GF (Gluten Free), or Vegetarian preference**

**Doors open at 5:00 PM | Auditorium | Buffet starts at 5:30pm**



# Club News

Rincon Country West



Cactus Quilters is a group of creative people who like to sew and quilt. Our community service groups have opportunities for non-sewists.

We were treated to guest speaker, Karolyn "Nubin" Miner, who shared some of her very beautiful quilts. Members of Cactus Quilters enjoyed her presentation immensely!



This group is open to anyone living permanently or seasonally at RCW. Dues are \$10 annually. Please contact a board member if you are interested in joining. Contact information is available in the Sewing & Quilting Room on the bulletin board.

## *Ladies Golf*

Calling All Lady Golfers at RCW! Are you a golfer looking to connect with other RCW residents for some fun on the course? Join our supportive group of women golfers for enjoyable, non-competitive rounds and socializing!

**Nine & Wine** - Play 9 holes on 1st and 3rd Tuesdays, starting January 7 and January 21.

After golf, unwind with wine, snacks, and great company at RCW's courtyard.

**Eighteen & Green** - Play 18 holes on Thursdays.

Sign-up sheets, including course and tee times, are available in the Coffee Room. Be sure to sign up by Sunday at 5 PM.

For questions, contact:

Cheryl Henry, akrebel50@gmail.com,  
575-636-4690 and Willa DeCastro,  
decastro96@cox.net, 316-644-7619

We can't wait to see you on the greens!

## *Low Impact Aerobics*

When: 7:45 AM to 8:45 AM Mon, Tues, Wed, and Thur  
(no charge for class)

Where: Rec Hall Oct 28 to April 3, 2025

Mon and Wed is faster pace while marching in place along with weight training

Tues and Thurs is designed to increase strength and cardio health while seated in a chair & or standing.

## *Intermediate Aerobics*

STARTING January 7 to April 3, 2025

When: 7:45 AM to 8:45 AM Tues and Thur.  
(no charge for class)

Where: Auditorium Lead by Wanda Amey

Contact: Debbie Peterson 815-245-0354

## *Patriotic Quilt Group*

When: Every Friday 8:30 AM - 3:30 PM

Where: Sewing and Quilting Room. Oct 20, 2024 - April 12, 2025

Contact: Sharon Young, 479-644-8643, youngsharon87@gmail.com

The Patriotic Quilt Group creates beautiful quilts for residents of the Tucson Veterans' Home. The group's goal is to make thirty quilts a season and personally deliver them to the residents of the Veterans' Home. The project is funded by donations, time and skills of our talented seamstresses. It's a wonderful place to gain knowledge, to piece, bind, sandwich and quilt. Come join us to assemble the red, white and blue with fun and laughter.



## *Garden Railroad Club*

Members of the RCW Garden Railroad Club run trains five days a week from November until the first week of April and hold several special events throughout the season as well. The current run schedule is posted on the front of the Depot. Good food! Good company! Good entertainment! And lots of prizes! Spud Out! Spud Out tickets will go on sale Tuesday, December 17. Be sure to get your tickets early because they do sell out quickly. Spud Out will be held Saturday, January 18 at 5:00 PM in the Auditorium. RCW Garden Railroad Club meetings are held twice a month on the first and third Wednesdays at 3:00 PM in Classroom Two. Visitors are always welcome at our meetings. For more information be sure to stop by the Railroad Club booth at the Activities Expo on January 9 at 6:00 PM in the Auditorium. Contact information is available in the Activity Office.

## *Bocce Ball*

The Bocce courts are up and running. Our official start for the season will be Monday, January 6. We welcome all from beginners to experienced. The park has made many welcomed improvements at the courts. Please join us!

Sibyl Grenier. 303-589-3679 Ron Nasman  
719-314-7146 Monday, Wednesday, Friday. 10:30  
Tuesday 1:00

## *Birding Club*

Welcome to the RCW Birding Club! We invite you to join us as we search for birds in a variety of habitats. If you're new to birding, we'll help you learn. If you're experienced, your eyes and ears can help us locate and identify more birds. Official outings will be twice a month on Fridays starting Jan 10th. Gather at Classroom 2 at 8 AM for a briefing, then carpool to the destination. Be prepared for changing weather conditions and last minute changes to birding locations. There is lots of walking, so wear sturdy shoes for dirt, gravel or rocky trails. Bring binoculars, water, snacks or lunch. Also bring money for carpool contribution (local \$5, out of town TBD), donation to bird feeding stations, and State and Federal entrance fees or bring AZ State Parks Pass and Federal lands pass. Bring your sense of wonder, sense of adventure, and sense of humor. Let's go birding!

Jan. 10 Sweetwater Wetlands Park 2511 W Sweetwater Drive, Tucson, AZ. Restroom facilities on-site. No entrance fee. \$5 carpool.

Jan. 24 TBD Diann Stone 208-890-5261

## *Stained Glass: With Copper Foil*

Starts December 2, 2024--Multi-Purpose room.

Sign-up for lessons in multi-purpose room.

Lessons are two weeks on Monday morning starting at 9 am. Classes on cutting, grinding, foiling and soldering will be provided.

Project kits and tools are available.

GREAT NEWS! The Stained Glass Club

Starting December 2, 2024

Knife Sharpening

Tuesday—Friday from 9:00 to 11:00

Multipurpose room

\$5.00 for 3 knives

## *SkyMed Lunch-N-Learn, Jan. 15*

This New Year resolve to protect yourself, your family and your savings with the most comprehensive emergency medical transportation plan, wherever you may be. SkyMed's exclusive program services include:

Transport to home hospital of your choice

Return of RV, car, motorcycle, pets, and physical remains

Visitor transport upon hospitalization

Coverage at home – no mileage restrictions

Driver disability coverage – Plus more vital services

Learn more about these and additional services and bonus offers.

Sign up for food count at the Activity Office or at the RCW Coffee on Jan. 10 or contact the Reps. below to attend the FREE Lunch-N-Learn on Wed., Jan. 15, at 10:45 AM in the RCW Rec. Hall. RSVP required by noon, Jan. 14!

Jerry & Marilyn Collins, SkyMed Representatives  
Ph 208-867-8739, [jerry.collins@skymed.com](mailto:jerry.collins@skymed.com)

## *PHASE 10 CARDS*



*Tuesdays 1:00 to 4:00 pm*

*Classroom 1*

*Beginners and seasoned players  
are welcome.*

*Dahlia Tucker 360-510-4925*

*Lori Sawyer 509-429-0821*



## *Ukulele Strummers*

All are welcome to join the RCW Strummers. We meet 3 times a week from November 2 – April 12th. Please note room changes.

- > Saturdays, 10:00 – Noon: Rally Room – All Levels
- > Tuesdays, 10:00 – Noon: Classroom 1 – Intermediate Level
- > Thursdays, 10:00 – Noon: Classroom 1 – Beginner Level

Bring your instrument and join our group! We'll learn chords, practice our music skills and have fun as we play together in a group. Music is selected from The Daily Ukulele songbooks as well as from music chosen by the group.

Contact Jeanne McDowell: 920-251-0499,  
j\_mcdowell77@yahoo.com

Linda Metzger: 651-968-6316,  
metzg019@comcast.net

Fred Bryant: Beginner Ukulele, 616-240-3724,  
fbryant319@gmail.com

## *Art/Drawing*

Three art classes will be offered this season. \$120 per class. Signup in the coffee room.

### **Drawing 1 - Techniques in Graphite Portraiture**

When: 1:00 PM to 4:00 PM, Fridays Date: Jan 31 to Feb 28 (5 weeks) Where: Classroom 2

Go from a line drawing to creating a realistic portrait, learning an advanced shading technique. No experience necessary. Contact: Mary-Anne Murphy 519-77-1374 mamurphyart@hotmail.com

### **Drawing 2 - Beyond the Basics**

9:00 AM – 12:00 PM, Thursdays Jan 13 to Feb 13 (5 weeks) Classroom 2

Build on the skills learned in Drawing 1 using your own reference photo or you may choose one provided. Prerequisite Drawing 1. Contact: Mary-Anne Murphy 519-77-1374 mamurphyart@hotmail.com

### **Fundamentals of Art**

9:00 AM to 12:00 PM Tue Jan 28 to Feb 25 (5 weeks) Classroom 2

The 5 week course will cover the major concepts of Composition - Values, Color, Light & Shadow, Form & Structure. Susi will also cover many of the tools and mediums used to create two dimensional art. No experience is necessary.

Contact: Susi Havens-Bezaire 614-348-7958  
shbezaire@gmail.com

## *YOGA*

Mondays and Wednesdays: 8:30-9:30 AM in the Auditorium



Taught by Jeri Wilson, 500-hour Certified Yoga Teacher, 20 years of experience.

This is a multi-level class, ideal for anyone who wants to get stronger and more flexible. You do not need to be flexible to attend, but you'll need to be able to get up and down from the floor with ease. **BRING A MAT & any other supplies you may use.**

Fee: \$5.00/ class Jeriwilson723@gmail.com  
207-692-4191

## *Blood Pressure Clinic*

Beginning Friday, January 10th, Volunteer Healthcare Providers will be offering a Blood Pressure Clinic. This service is available



to RCW residents. You will receive a trifold card on which your vital signs will be entered. It will be your responsibility to bring that card with you to each session. We will not be keeping records with your vitals on them, as that is a possible HIPAA concern.

If you have a portable Blood Pressure machine that you'd like for us to check, please bring it to your first visit. We will use your machine and then take your vitals manually to determine the accuracy of your machine.

Please contact Kathy Hutson, B44, 765-808-1693 if you are able to help with the clinics. We will have a short meeting prior to the first session and to make up a schedule.

Blood Pressure Clinics every Friday 10:00 – 11:30 a.m. in the Exercise Studio.

See you there!!

## CARDO

If you like BINGO, you'll love CARDO. Cardo is like playing BINGO using cards. Give it a try...it's a blast!

Event Start: 6:30 PM Event End: 8:30 PM Rec Hall

Contact: Wally Schultz 920-840-8017  
wtschultz@gmail.com; or Sue Schultz 920-470-8602 wtschultz@gmail.com

## Victoria Vox In Concert



RCW Strummers present Victoria Vox in concert on Saturday, February 15th, 7:00 pm. Victoria Vox is an award-winning professional ukulele and mouth trumpet player. Be sure not to miss this

entertaining concert. General Admission tickets will go on sale in January.

## ACS Bake Sale

The Arts, Crafts, & Sewing (ACS) Club will be sponsoring our annual Bake Sale on Superbowl Sunday, February 9th, 2025. Goods will be sold in the Auditorium beginning at 9:00 a.m.

ACS members (and even non-ACS members who wish to support us) can bring their bake sale donations to the Arts & Crafts Room on Saturday, February 8th, from 4:00 PM to 7:00 PM or on Sunday, February 9th, morning before 8:00 AM.

The Bake Sale will have all kinds of goodies: cookies, cakes, brownies, munchies, pies, candies, possibly items for our furry friends, gluten free and keto items, and maybe even some alcohol-containing items. ;-)

For questions, please contact Chairpersons:  
Donna Wadsworth 781-710-5863  
Joanne Carley 781-258-3660  
ACS President, Kathy Hutson 765-808-1693.



## Nana's Needles

Come to enjoy knitting or crocheting with our casual group. No officers, no dues, just conversation & fellowship while we create items to donate to Casa de los Ninos, an organization caring for foster children. We have needles & yarn for use, & gratefully accept donations of yarn.



When: 9:30am-11:30am, Fridays

Where: Arts & Crafts Room

Contacts: Cathy Hershberger, #1085,  
402-304-7579, clhersh622@gmail.com

Joan Van Loozenoord, #1088, 303-908-8746,  
jkanvanlooze@gmail.com

## Ukulele Strummers

All are welcome to join the RCW Strummers. We meet 3 times a week from November 2 – April 12th. Please note room changes.

Saturdays, 10:00 – Noon: Rally Room – All Levels

Tuesdays, 10:00 - Noon: Classroom 1 - Intermediate Level

Thursdays, 10:00 - Noon: Classroom 1 – Beginner Level

Bring your instrument and join our group! We'll learn chords, practice our music skills and have fun as we play together in a group. Music is selected from The Daily Ukulele songbooks as well as from music chosen by the group.

Contact Jeanne McDowell: 920-251-0499,  
j\_mcdowell77@yahoo.com

Linda Metzger: 651-968-6316,  
metzg019@comcast.net

Fred Bryant: Beginner Ukulele, 616-240-3724,  
fbryant319@gmail.com





## *Absolute Beginner Line Dancing*

Absolute Beginner Line Dance Class takes place in the Recreation Hall on Fridays from 10:00 to 11:00 AM. This class is open to any resident in the park and their visiting guests. There is no charge! This class is sponsored by the Line Dance Club in the park. So here's your chance to get those dancing shoes on and learn some easy line dances!

## *TED Talk Discussion Group*

Interested in getting together with others for good conversation? For the next four months we will be meeting to enjoy stimulating discussions after watching a short TED Talk. First we watch a short video and then talk about it.. We don't release what the topic will be before the meeting, but topics will be selected that we can all relate to and will inspire deep conversation. Kathy & Thom Gottberg and Deb Elhard will serve as moderators. (Go to TED.com if you want examples of the diverse subjects—they are at no cost, you do not have to join to watch) We hope to see you there!

January meeting: : January 21, 2025 @ 1:00 PM in Rec Room

Questions: email Kathy & Thom at [kathy@gottgreen.com](mailto:kathy@gottgreen.com).



## **MEET THE CLUBS**

**6:00 PM THURSDAY**

**9 JANUARY 2025**

**AUDITORIUM & REC HALL**



## *POTLUCK - Illinois*

February 3rd, 2025 in Rally Room

Social Hour 5:00 PM to 5:30 PM

Dinner 5:30 PM TO 6:30 PM

Sign up sheet in Coffee Room. Please bring tableware, drink, and a dish to pass. \$2.00 per person. Contact

## *Oregon Potluck - calling all Oregonians*

February 13th, 2025, 5:00 PM In Rec Hall.

More info in the Feb newsletter. Sign up in the coffee room beginning Jan 10th.

Questions contact Debbie Lown 541 520-7912.

Or Ron Lown 541 520-0012.

## *Artful Coloring*

Enjoy this time of fellowship, coloring with your own choice of pencils, pens, etc. Please bring your own coloring book and "tools" to color. We also have paints and rocks, with brushes and decorating tools to design your own creations. Extra rocks always needed and appreciated!

When: 3:00 PM to 4:30 PM, Wednesdays

December 6, 2024 to April 4, 2025

Where: Classroom 1

Contacts: Cathy Hershberger, #1085, 402-304-7579, [clhersh622@gmail.com](mailto:clhersh622@gmail.com)

Connie McElvain, #317, 402-499-1035, [Clmc622@aol.com](mailto:Clmc622@aol.com)

## *Easy Chair Yoga*

Is an exercise designed for participants to sit on chairs for the entire experience. It is lead by watching a professional DVD and is 30 minutes long. It is designed for people of all health conditions. This yoga is held on Mondays and Thursdays at 10:00 AM in the exercise studio... the room under the gym and below the pool. There is no cost.

## *Activity Expo*

(formerly known as Meet the Clubs Night)

Come and visit with representatives from RCW's many clubs, activities and sports. You will find many groups ready to welcome you to a new pastime. Auditorium / Rec Hall

**Thursday, January 9, 2025 6:30 – 7:30 PM**

## 2025 Photo Exhibit

What pictures did you take during your travels this summer?

I bet you would like to show them at the Photo Exhibit Thursday, March 6th, 2025

### Categories

- > People
- > Birds
- > Landscape
- > Macro/Close-up
- > Black & White
- > Pets Action
- > Wildlife Abstract
- > Open

Look for details on the bulletin boards.



## Garden Railroad Club

Members of the RCW Garden Railroad Club run trains five days a week from November until the first week of April and hold several special events throughout the season as well. The current run schedule is posted on the front of the Depot.

Good food! Good company! Good entertainment! And lots of prizes! Spud Out! Spud Out tickets will go on sale Tuesday, December 17, 2024. Be sure to get your tickets early because they do sell out quickly. Spud Out will be held Saturday, January 18 at 5:00 PM in the Auditorium.



RCW Garden Railroad Club meetings are held twice a month on the first and third Wednesdays at 3:00 PM in Classroom Two. Visitors are always welcome at our meetings.

For more information be sure to stop by the Railroad Club booth at the Activity Expo on January 9, 2025 at 6:00 PM in the Auditorium. Contact information is available in the Activity Office.

## Desert Tones

The Desert Tones are welcoming new members. This women's a cappella singing group performs fun arrangements in 4-part harmony. The ability to learn parts and memorize is a must - but lots of help and support is provided. Rehearsals are Wednesday afternoons, from 3:00 to 5:00 PM in the Rec Hall, starting January 8, 2025. We will be performing in March. Call or text Diane Larrabee (916-205-4850) for more information.







WILLIAMS EXPRESS

*Thank you for Supporting  
our Local Advertisers!!*



*Williams Express is the proud printer  
of your community newsletter!*

*Give us a call if you have a need for  
printing, signs or banners!*

**480-967-1014**

**430 S. Rockford Drive #109, Tempe, AZ 85288**

**[www.williamsexpress.com](http://www.williamsexpress.com)**



Veteran Owned

*"Helping People  
Enjoy RV Life"*

- ✓ Mobile RV Repair
- ✓ Solar Systems
- ✓ Tank Cleaning
- ✓ Pre-Purchase Inspections

**Let us know how we can help!**

**(605) 981-6224**

info@aaruserservices.biz  
https://aaruserservices.biz



### Number One In Air Ambulance Member Services

"Our goal is simply to be the best emergency air transportation membership service in the world." Will Klein, Chairman SkyMed Group of Companies

### SkyMed Lunch-N-Learn Seminar, Jan. 15

Resolve to add adventure, a less sedentary lifestyle for the upcoming year. With this change, protection due to a serious injury or exposure to devastating illnesses are paramount for your well-being. SkyMed offers life-saving and financial-saving solutions with our guaranteed return to home hospital, known medical providers, and loved ones. Learn more about SkyMed services and bonus offers on **Wed., Jan. 15, 10:45 AM, in RCW Rec. Hall**. Sign up in Activity Office or contact Reps by noon, Jan. 14, 2025.

Jerry & Marilyn Collins, SkyMed Representatives  
Ph 208-867-8739, [jerry.collins@skymed.com](mailto:jerry.collins@skymed.com)

NO CO-PAYS | NO DEDUCTIBLES | NO CLAIM FORMS

# UNDERHOUSE / CRAWL-SPACE INSPECTION

**\$99.00**  
(a \$195 value)

**\$99.00**  
(a \$195 value)

## Under Your Mobile Home / Manufactured Home !!

A MAJORITY of mobile homes / manufactured homes have cuts and holes in the underside vapor barrier, insulation, and air-duct system from repairs, plumbing leaks, animals, the original set-up, and poor design. These issues create an unhealthy home.

30 YEARS  
EXPERIENCE!!

Other  
Services

### DUCT CLEANING

... Your Air Ducts Are the Source  
of the Air You Breathe!

\*Under house inspection included in this service

Starting at \$195

### AIR DUCT SEALING

SAVE MONEY • IMPROVE COMFORT • ENERGY EFFICIENT

Mobile home/manufactured home ducts are prone to leak. The average home loses 30% of it's conditioned air. If your vents are in the floor, duct sealing is the most cost effective repair you can do!

Single Wide \$495 Double Wide \$595

\*Duct cleaning and under house inspection included in this service.

### RE-LEVELING

RECOMMENDED EVERY 3 - 5 YEARS

PREVENT- SQUEAKY FLOORS, RUBBING DOORS, CRACKS IN WALLS

\*Under house inspection included in this service

Starting at \$195

**What's Under Your House? We See It All !!!**

**Don't Wait!  
Call Today!**



[www.SuperiorHomeProsAZ.com](http://www.SuperiorHomeProsAZ.com)



AZ Cont. Lic. # ROC244674  
30 Years Experience  
LICENSED • BONDED • INSURED



MESA / EAST VALLEY 480-830-9799 PHOENIX / WEST VALLEY 602-433-9799 TUCSON / CASA GRANDE 520-792-9799 YAVAPAI & COCONINO COUNTY 928-772-9799 MOHAVE COUNTY 928-763-9799 YUMA 928-342-9799 GILA & NAVAJO COUNTY 928-537-3331 COCHISE COUNTY 520-792-9799



# Right RV. Right Price. Right Now!

Over 200 new and used motorhomes and adventure vans in stock! Top brands including Winnebago, Entegra, Tiffin, Fleetwood, Grech RV and many more. Every unit clearly discounted with an Everyday Low Price. Stop by today!

## New '25 Entegra Vision 29S

MSRP: \$212,785 | Discount: \$82,787



**Now: \$129,998**

1 @ this offer • AN207203-A02702

## Used '22 Newmar Dutch Star 4081

WAS: \$432,514 | Discount: \$217,312

450 HP  
Diesel Pusher



**Now: \$379,998**

1 @ this offer • TP206569-NR2483

Units were in stock at the time ad was created. All advertised prices exclude government fees and taxes, any finance charges, \$995 dealer document processing charge, any electronic filing charge and any emission testing charge. Ad expires January 31, 2025.

I-10 @ Irvington Road in Tucson  
LaMesaRV.com

**LaMesa REC VAN**  
World's Largest Motorhome Dealer

## Full Service Mobile Tire Store

We sell and install  
RV and Truck tires ON SITE

All Tire Brands and types

Class A/B/C Motorhomes  
Coaches

Trailers and 5<sup>th</sup> wheels  
Tow vehicles

*Call or email for a quote*

**520-775-0042** or

[info@treadlogicaz.com](mailto:info@treadlogicaz.com)

[www.treadlogicaz.com](http://www.treadlogicaz.com)

Locally owned



# Taking Care of You 24/7

ROC 105179/104645

## Heating • Cooling • Refrigeration

- Heating and Cooling Repair and New Systems
- Conventional and Ductless Systems
- Air Purification Specialists
- Locally Owned & Operated since 1970



**520-326-9672**

**Money Saving Coupons at [bjrefrigeration.com](http://bjrefrigeration.com)**

Financing Available  
Licensed, Bonded, Insured

# AIRPROS

Trust Your Local, Family-Owned & Operated, with Nearly 25 Years Serving Your Community

**CALL TODAY (520) 886-3164**

**HEATING • COOLING EXPERTS**

**LIMITED-TIME ONLY**

**\$25.00 OFF**

any Repair **\$300.00 OFF**  
or

ANY NEW INSTALLATION OR REPLACEMENT

**Expires 10/31/25**

**LICENSED. BONDED. INSURED.**

Ask for the "ChillyDog"

**airprosinc.com**



✓ **GOLD MAINTENANCE PLANS AVAILABLE**

✓ **WE'LL MATCH ANY COMPETITOR'S PRICING\***

Offer must be in writing from an active, commercially-licensed registered HVAC Company.

✓ **SPECIAL OFFERS ON FALL/WINTER START-UP**

✓ **FREE SECOND OPINION ON REPAIR**



HOME OF THE



**MAINTENANCE  
COMFORT GUARANTEE**

MAINTAIN RELIABILITY  
Minimize EXPENSES  
Maximize EFFICIENCY

**GOLD PLAN**  
SILVER PLAN ALSO AVAILABLE





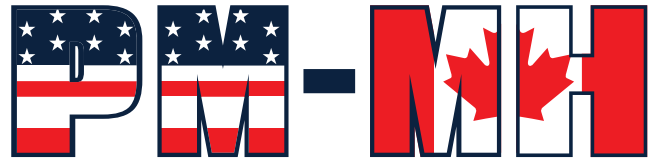
**RV  
Detailing**

**Park  
Model  
Exterior Cleaning**

Wash & Hand Wax • Oxidation Removal  
Roof Treatments • Rubberized Roof Coatings  
Headlight Restoration • Awning Treatments



**520.971.8451**



Park Model - Manufactured Home  
Insurance Services, LLC

*Call Us  
for a  
Quote Today!*



KODY

**520-244-1244**

Let us customize a quote for your home.



DERON

**Happy New Year 2025!!**

*from all of us at*



**Williams Express**

*Dedicated to Customer Service*

**PRINT • COPY • DIGITAL COLOR**

*Proud printer of your community newsletter!!*

**Williams Express now prints SIGNS and banners!!**

[pam@williamsexpress.com](mailto:pam@williamsexpress.com)

**480-967-1014**

# NEWER LOWER RATES


**GET A QUOTE  
833.807.7753**

OFFERING **AUTO | HOME | LIFE**

**FOR PRICING  
VISIT US AT :  
FOXRELIABLE.COM/PRICING**

**COMING FROM CANADA? WE CAN HELP!**  
**WE SPECIALIZE IN INSURING WINTER VISITORS.**

HOME VALUE	STORAGE SHED	PERSONAL PROPERTY	LOSS OF USE	PERSONAL LIABILITY	MEDICAL PAYMENTS	DEDUCT- IBLE PER EVENT	ANNUAL PREMIUM
\$50,000	\$2,500	\$25,000	\$5,000	\$100,000	\$500	\$1,000	<b>\$550</b>
\$60,000	\$3,500	\$30,000	\$6,000	\$100,000	\$500	\$1,000	<b>\$610</b>
\$70,000	\$4,500	\$35,000	\$7,000	\$100,000	\$500	\$1,000	<b>\$670</b>
\$80,000	\$5,500	\$40,000	\$8,000	\$100,000	\$500	\$1,000	<b>\$725</b>
\$90,000	\$6,500	\$45,000	\$9,000	\$100,000	\$500	\$1,000	<b>\$750</b>
\$100,000	\$7,500	\$50,000	\$10,000	\$100,000	\$500	\$1,000	<b>\$820</b>
\$110,000	\$8,500	\$55,000	\$11,000	\$100,000	\$500	\$1,000	<b>\$890</b>
\$120,000	\$9,500	\$60,000	\$12,000	\$100,000	\$500	\$1,000	<b>\$945</b>

\*\*\* Prices printed are subject to change without notice. For the most up to date information visit at: [foxreliable.com](http://foxreliable.com).

The Arizona rates listed above are based on the following assumptions: Insured's age is 64 years old, no mortgage, no claims for three years, and the unit was built in 1995 or newer. Home values are based on an \$85 square foot replacement cost with a deductible of \$1,000. Visa / Mastercard / Discover / American Express





**LIFETIME  
BATTERY GUARANTEE**  
ON ANY NEW BATTERIES  
WE SELL.  
CALL FOR INFO.

**Factory Trained Technicians!**  
**We Service ALL Makes and Models.**  
*We do it right, the first time!*

Club Car

onward  
HP / LION

ADVANCED **E**v

4888 E 22ND STREET, TUCSON, AZ 85711  
520-GOLF CAR | [WWW.GOLFCARSO FARIZONA.COM](http://WWW.GOLFCARSO FARIZONA.COM)



# TUCSON PARK & SELL RVS INC.

7030 E OLD VAIL RD, TUCSON AZ 85756 (520)-574-9344

★ We consign, Buy, Sell and trade Diesel pushers, High End class A, B & C Motor Homes, as well as Fifth Wheels, Travel Trailers, Toy Haulers, Trucks and Tow Vehicles with no consignment fees!

★ Sales open 7 days a week. Full Service Repair Shop open Monday - Friday

Scan for our  
online inventory



SCAN ME



[www.tucsonparkandsellrvinc.com](http://www.tucsonparkandsellrvinc.com)

Open Mon-Sat 8am-5pm

Sunday 10am-3pm

We sell propane  
Monday - Saturday  
8am-5pm

**\$3.49  
GAL**







# Looking for a Permanent Tooth Replacement?



**FREE CONSULTATION & DIAGNOSIS**

**THE BIGGEST  
DISCOUNT  
OF THE YEAR!**



**All-On-X**



**3-D Panoramic  
X-Ray Scanner**



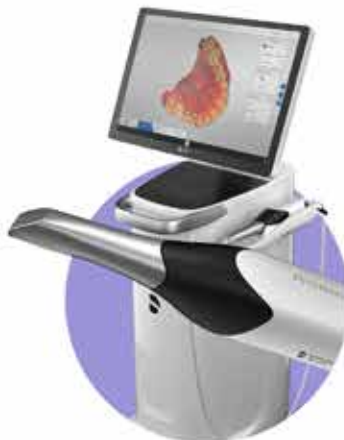
**3D Guide Design  
100% Digital**



**Snap-On  
Dentures**



**Predictable Keyless  
Guided Surgery**



**High-Performance  
Primescan  
Intraoral Scanner**

**SINGLE  
IMPLANT  
FROM  
\$790  
USD**

(LIMITED TIME ONLY)



**NEODENT**  
A STRAUMANN COMPANY  
**DIO IMPLANT** **straumann**

No Insurance Accepted with this Offer Some Restrictions Apply

✉ [info@arizonadentalnow.com](mailto:info@arizonadentalnow.com)  
☎ **(520) 285-9022**

📍 Pesqueira Plaza #14 Suite 1 to 4,  
Fundo Legal, 84030 Nogales, Sonora



Find out more about  
our **complimentary  
transportation!**



# RINCON COUNTRY WEST MARKETPLACE



**PLUMBER  
KINGS**  
Plumbing and Drain Service  
LICENSED • BONDED • INSURED • ROC# 335723

**520.447.6991**  
Office

5025 29th Street  
Tucson, AZ 85711

RESIDENTIAL  
COMMERCIAL

**SUPER HANDYMAN, LLC**

Paul Hernandez  
paulherib6@gmail.com  
1-832-997-6379

\*Licensed and Insured  
\*ID: 23698198



*Eileen's*  
OF TUCSON  
Sizes S-XL

4811 E. Grant Rd  
6036 N. Oracle

Open Tues - Sat 9:30AM - 5PM  
Closed Sunday & Monday



**Urgent Care RV Repair**  
Scott Harris  
Mobile RV Technician  
(831) 588-3148

www.UrgentCareRVRepair.com  
scott@UrgentCareRVRepair.com

Certified. Insured.



Thank you for  
Supporting our  
Local Advertisers!

WE WISH YOU A VERY  
**HAPPY  
NEW YEAR**



**Williams Express**  
*Dedicated to Customer Service*  
PRINT • COPY • DIGITAL COLOR  
WIDE FORMAT PRINTING

We specialize in printing:  
CAMPAIGN Signs, Yard Signs, Banners,  
Window Decals, Newsletters, Directories,  
Business Cards, Letterhead, and much more!!

**480-967-1014**  
www.williamsexpress.com

*Proud printer of  
this newsletter!!*





# 10% OFF on implants



**Dental Implants**  
Single implant, All on 4,  
All on 6 and more

**We accept most  
U.S Dental Insurances**



## Modernized Technology



**3D Shape Scan**  
Digital solutions to improve  
our patients' experience.



**Air Flow System**  
Conveniently and effectively  
removes tartar and dental stains.



**RAYface**  
Advanced 3D imaging  
for precise diagnostics and  
personalized treatment plans.

Visit our  
website



Mention this coupon when scheduling your appointment



✉ [info@dentallaser.com](mailto:info@dentallaser.com) ☎ (520) 636-8347  
📍 Pesqueira Plaza 26, Fundo Legal 84030 Nogales, Sonora, Mexico