

January 2022
Volume 48
Number 4

Villager



Office: 520-886-8431
www.RinconCountry.com

Rincon Country® East RV Resort
8989 E. Escalante Rd. Tucson, AZ 85730

The East

Welcoming in 2022 with RCE

Coming to RCE This Month

Happy
New Year



Showtune Productions presents

Colte Julian as Elton John

Jan 14 • 7:00 p.m. • Aud • \$17.50

Direct from Las Vegas, Colte Julian's electrifying tribute to the great Elton John features a live band, colorful costumes and Elton's greatest hits including Rocket Man, Bennie & the Jets, Tiny Dancer, Don't Go Breaking My Heart, Pinball Wizard, Crocodile Rock, Don't Let the Sun Go Down On Me, Candle in the Wind and much more!

RCE loves Showtune Productions who always bring the highest quality of performances in Arizona. Join us for a brilliant night of high class entertainment!



William Florian presents

A Tribute to Neil Diamond

Jan 21 • 7:00 p.m. • Aud • \$17.50

Please join us as RCE welcomes William Florian as Neil Diamond. William weaves stories, songs and humor from Diamond's early acoustic years honoring the life and achievements of this legendary minstrel. You will find yourself singing along as William performs Diamond's most celebrated songs such as Song, Sung, Blue; Sweet Caroline; Play Me; Cherry Cherry, Holly Holy; Solitary Man and many, many more!

Florian is a former member of the famous 1960's group The New Christy Minstrels. Singer/songwriter William Florian is the perfect combination of musician and storyteller, blending a reminiscent sound with humor and tales of his own musical explorations.

William Florian is a true entertainer and this performance will be one that you will be talking about for days!



Hello everyone and Happy New Year!

We are so excited to get the new year started and we assure you that the Activity Office has a lot planned to keep you all busy this January!

Just a reminder that we are entering the high season which means that there will be a lot more people in the resort. Remember to be patient when folks are backing in their rigs. One of the many great things about traveling is meeting new people. I encourage you to introduce yourselves and welcome our new Rincon Country residents.

Every Tuesday I spend time at Rincon East and am happy to answer any questions or concerns that you may have. You can also reach me via email: wendy@rinconcountry.com. If you would like to meet with me, please email me ahead of time so I can give you the time that you need.

Have a wonderful and safe January!

Wendy Bykofsky

General Manager



“Keepin’ You Posted” with the RCE Post Office Team

Hours: 9:00 AM - 1:00 PM

Monday through Saturday

**Closed between 9:30 - 10:30 AM to pick up mail
from main Post Office.**

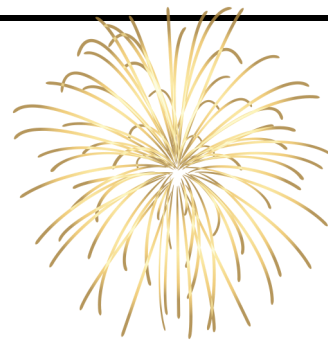
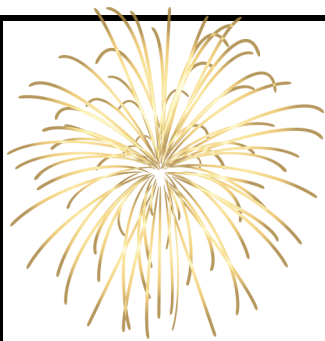
The PO has free Priority Mail boxes that can be taken to the main Post Office.

We sell first class stamps, post card stamps and Canada global stamps.

We will put a notice in your mailbox for packages that will not fit in the box itself. Packages can be picked up at the counter in the coffee room.

Have a wonderful season from your Post Office team!

Terry, Tamara and Becky



“Acting Up” with the Activity Office

Happy New Year to all of you! We are so excited to get the new year off to a great start with activities for everyone!

Performances: We welcome to the RCE stage Colte Julian as Elton John. With classics such as Rocket Man, Crocodile Rock and Your Song, your toes will be tapping and you’ll be singing along all night long! We are really excited to invite William Florian to present his tribute to Neil Diamond this month. As Neil Diamond says in his classic, Sweet Caroline, “Good times never seemed so good!” and we promise you a great night with this show!

Dances: You asked for them to come back and they are....The Hardscrabble Road Band and their amazing saxophone player will be back in January to rock the night away with you. We also welcome the Five Way Street Band who will entertain you with classic rock, folk and country tunes.

Club Events: We love our clubs here at Rincon Country and encourage you to support your club’s events. Shuffleboard will be holding their monthly Second Sundae Ice Cream Social; Astronomy Club will be keeping us racin’ with their annual Chili Feed and Horseraces event and of course January starts the Sawmill’s monthly meals with the Ham and Bean Soup Dinner. Get out and support your clubs while enjoying a meal with friends!

Ladies Luncheon: Each season we hold a Ladies Luncheon and invite our local ladies to join in for an awesome lunch, while benefiting the Southern AZ Children’s Advocacy Center. Please see the Activity Office or Karen Clark (Lot 231A) for more information.

State Potlucks: January brings our states potlucks, so make sure to find your state and join your friends away from home in your Tucson home for a great evening! Don’t see your state listed? Don’t worry, we continue the potlucks into February! Check with the Activity Office for more information.

Shuttles: From the International Wildlife Museum to Trail Dust Jeep Tours, we are offering an awesome array of shuttles for you this January. Make sure to sign up in the Activity Office!

Have a wonderful January!

Your Activity Office Team,

Shannon, Sue, Jean and Terry



“Keepin’ Up Appearances” with the Maintenance Team

Happy New Year to all! We welcome in the new year and look forward to seeing all of the new guests coming into the resort.

We would like to introduce our new Maintenance assistant, Dan. Dan specializes in sheet metal working and is very excited to be here at RincoN Country. If you see him, make sure to say hello and introduce yourself.

Just a few reminders from our team:

Please do not place items next to the garbage dumpsters in the back storage area. We offer bulk pick-up each month and encourage you to utilize this service.

Remember that it does get cold in the desert, so if you need to, please wrap your pipes when the colder temps come in. We will be doing the same to the main pipes at the resort.

Have a great January!

Your Maintenance Team,
Neil, Randy and Dan



Speed Limit

Please observe the 10-mph speed limit inside the park.



“Checkin In” with the Front Office

Happy New Year! Who else feels like we are all sitting on top of the roller coaster and are holding on for dear life as we head into 2022? Hold on tight, here we go!

It has been a wonderful holiday season, getting to see so many familiar faces back again and with their smiles intact! We sure loved seeing all the bright smiles...right up until Pima County started requiring masks again anyway. We are still holding our collective breaths as we wait to hear border updates from our Canadian neighbors. Some have returned but you just never know what news is around the corner. Hopefully they will continue to be able to join us! Meanwhile, we are sure having fun with the golfcart parades and dances and other shenanigans! So again, don't forget to park only in your own or approved driveways...someone could be arriving any day into an empty site!

Your Front Office Team,
Joanne, Jasmine, Tamara and Kathy

For Club Leaders

The East Villager

Submissions

Club leaders may now submit articles for “The Villager” online:

shannon@rinconcountry.com

Please observe the following guidelines for submitting articles for *The Villager*. **The deadline for the monthly Villager is the 5th day of the month prior to issue date.**

For example, the deadline for the February *Villager* is January 5.



Include times, dates, room locations, and contact names and numbers. Please do not **bold**, underline or use ALL CAPITALS. Please keep articles to 150 words or less.

Bulletin Boards

The bulletin boards outside the Activity Office are for activity-related events. If you or your club would like to post something on this board, it must be approved by the Activity Office. Approved announcements will be posted once a week. To be sure we have room for all clubs, please keep your announcement to 1/2 page or smaller.

ACTIVITY OFFICE HOURS

Monday through Friday
9:00 am - 4:00 pm

Closed Saturday & Sunday

Tel: 520-296-4651

Guess the Country



Wednesday Morning Coffee & Donuts

To go along with our travel theme this season, each monthly newsletter will contain pictures of various items from a certain country and will ask, “How well travelled are you?” If you know the country represented by the items pictured, come into the Activity Office and put the name of the country on a piece of paper and put it in our “Guess the Country” box for your chance to win a free ticket to one of our events! We will pick the winner at the first coffee of each month! **You need to be present to win.**

Make sure to join us for a free donut and cup of coffee in the Auditorium on Wednesday mornings. Bring your own mug, and we fill it up with hot coffee (regular or decaf) or hot water for tea. Please enter through the Rec Hall and select a donut or a piece of fruit.

We'll give you important park news hot off the press, and there will usually be a brief message from our coffee sponsor. Doors open at 8:30 am. Coffee and donuts will be served and our program begins at 9:00. See you there!

January Coffee Sponsors:

Jan 5: Valentine Plumbing

Jan 12: PMMH

Jan 19: Freedom RV

Jan 26: Skymed & Tucson Mobile RV Service



Please note, no refunds will be given one week (7 days) prior to a shuttle where we have had to prepurchase tickets. This will be in effect starting January 1, 2022.

RCE Shuttle Excursions

Save gas and save the parking hassle: ride the RCE Shuttle to many exciting local events and area attractions. The RCE Shuttle will drop you off and pick you up at easy-access locations.

Sign up for these trips early! Space is limited to 12 passengers!

There is a \$5.00 fee pp for each shuttle adventure.

If your trip is over 100 miles, there will be a \$15.00 fee pp.

Masks are required on the shuttle.



Beer Tasting

Jan 3 • 3:30 p.m. • Breezeway • \$5 Shuttle Fee

Beer lovers and adventurers come along for one of our monthly beer-tasting shuttles. Enjoy learning about locally produced beers while supporting locally owned breweries in Tucson.

On this Jan 3 shuttle we will be visiting Barrio Brewing Company, Copper Mine Brewery and Moto Sonora.

Price of food and drink not included.



**BARRIO
BREWING CO.**



Sonoita Wine Tour

Jan 5 • 10:00 a.m. • Breezeway • \$15 Shuttle Fee

"Wine is one of the most civilized things in the world and one of the most natural things in the world that has been brought to the greatest perfection." Ernest Hemingway

Enjoy a variety of wineries in the beautiful area of Sonoita, Arizona. This is Arizona's premier wine country, officially designated as an American Viticultural area, with active wineries for over 40 years and ranches and farms going back generations to the 1830's. The area has been farmed for well over 4,000 years. You will visit 3 to 4 wineries during this adventure!

Shuttle: \$15.00

Does not include cost of food or drink



RCE Shuttle Excursions

Save gas and save the parking hassle: ride the RCE Shuttle to many exciting local events and area attractions. The RCE Shuttle will drop you off and pick you up at easy-access locations.

Sign up for these trips early! Space is limited to 12 passengers!

There is a \$5.00 fee pp for each shuttle adventure.

If your trip is over 100 miles, there will be a \$15.00 fee pp.

Masks are required on the shuttle.

Please note, no refunds will be given one week (7 days) prior to a shuttle where we have had to prepurchase tickets. This will be in effect starting January 1, 2022.



Hamilton Distillery Tour with dinner at Teresa's Mosaic Café

Jan 7 • 4:15 p.m. • Breezeway • \$5 Shuttle Fee • Tickets \$40.00

Visit Hamilton Distilleries for an engaging, interactive tour of their distillery and Arizona's only malt house. Following the tour, guests will be guided through a comprehensive tasting of their core products: learning the complexity and nuance of tasting single malts. Bottles and merchandise are available for purchase following the tasting. After your tour, head on over to Teresa's Mosaic Cafe for some awesome Tucson - style cooking!

Tickets per person: \$40.00

Please bring additional money for your meal.

Tour begins at 5:00 PM.

Shuttle Fee: \$5.00 pp.



Broadway in Tucson presents

My Fair Lady

Jan 9 • 12:00 p.m. • Breezeway • \$5 Shuttle Fee • Tickets \$35.00

Experience the magic of this timeless classic all over again! This beautifully designed revival by New York's esteemed Lincoln Centre was nominated for several Tony Awards in 2018, and is now taking to the road on a North American tour! Based on Shaw's play and Pascal's movie "Pygmalion," with book music and lyrics by Lerner and Loewe, *My Fair Lady* is triumphant. With musical greats like "Wouldn't It Be Lovely?", "Get Me to the Church on Time" and "I've Grown Accustomed to Her Face" it's no wonder everyone - not just Henry Higgins - falls in love with Eliza Doolittle time and time again.



RCE Shuttle Excursions

Save gas and save the parking hassle: ride the RCE Shuttle to many exciting local events and area attractions. The RCE Shuttle will drop you off and pick you up at easy-access locations.

Please note, no refunds will be given one week (7 days) prior to a shuttle where we have had to prepurchase tickets. This will be in effect starting January 1, 2022.

Sign up for these trips early! Space is limited to 12 passengers!

There is a \$5.00 fee pp for each shuttle adventure.

If your trip is over 100 miles, there will be a \$15.00 fee pp.

Masks are required on the shuttle.



Green Valley Farmer's Market

Jan 12 • 8:30 a.m. • Breezeway • \$5 Shuttle Fee

Nestled along the I-19 corridor you will find the Green Valley Village Farmers and Artisans Market, the area's longest running and largest marketplace. Each Wednesday, the morning comes alive with a variety of artisans and small, local food businesses at the Green Valley Village. Stroll the market and find artisan goods, jewelry, and southwest flavor for your home and taste buds! This market is reminiscent of the mercados from ages past, where merchants from the surrounding areas came to town to sell their wares. Come on by to pick up fresh vegetables from our local growers, enjoy a cup of fresh roasted coffee and flaky pastries, and check out some of the most beautiful hand-made arts and crafts from the region.

Reminder: the majority of the vendors prefer cash.



Tucson Mural Tour

Jan 14 • 10:00 a.m. • Breezeway • \$5 Shuttle Fee

It seems like almost every Tucson wall tells a story. Join Sue Martin from the Activity Office for a mural tour with lunch at Café A la Carte at the Tucson Museum of Art.

Tucson is home to a secret world filled with fantastic murals. The hardest part of this tour will be picking your favorite mural.

After your tour, head down to one of our favorite restaurants in Tucson, Café A la Carte.

Please bring additional money for your lunch.

**Cameron's Reliable
Maintenance Services
(520) 490-7632**

Kenneth Cameron - Owner, Operator
RV REPAIR • PARK MODELS • MOBILE HOMES
HEATING • COOLING • ELECTRICAL • PLUMBING

COMMERCIALLY INSURED
24 HOURS / 7 DAYS





RCE Shuttle Excursions

Save gas and save the parking hassle: ride the RCE Shuttle to many exciting local events and area attractions. The RCE Shuttle will drop you off and pick you up at easy-access locations.

Sign up for these trips early! Space is limited to 12 passengers!

There is a \$5.00 fee pp for each shuttle adventure.

If your trip is over 100 miles, there will be a \$15.00 fee pp.

Masks are required on the shuttle.

Please note, no refunds will be given one week (7 days) prior to a shuttle where we have had to prepurchase tickets. This will be in effect starting January 1, 2022.



Trail Dust Jeep Adventure Tours

Jan 17 • 12:30 p.m. • Breezeway • \$5 Shuttle Fee • Tour \$90 pp

Pull on your favorite jeans and come experience the real Sonoran Desert with Tucson's largest, most versatile jeep tour company in Southern Arizona. Voted 'The Best Jeep Tour Company in Arizona' you'll enjoy a rugged trip on a pristine trail into the Old West.

Our guides have diverse backgrounds in Arizona history, geology, flora and fauna, and ancient Native American facts and folklore. Our authentically dressed wranglers will both educate and entertain as they navigate through the natural beauty of the Sonoran Desert.

You will get in and out of your jeep for talks and demonstrations and will also experience up close and first hand some amazing desert critters (for those not faint of heart!) So bring along your camera and capture the beauty of the landscape on this fun and educational 3 ½ hour jeep tour.



Turquoise Trail

Jan 19 • 9:15 a.m. • Breezeway • \$5 Shuttle Fee

Ticket \$22.00

Created by former board members of the Presidio Museum, the Turquoise Trail is a 2 ½ mile loop through downtown Tucson that highlights structures and sites of historic interest and is marked by a turquoise stripe on the sidewalk. It begins at the Presidio Museum, located at the northeast corner of the original Presidio San Agustin del Tucson, founded in 1775.

After walking the Turquoise Trail you will have worked up an appetite. We will have lunch at El Charro. Established in 1922, El Charro Café of Tucson, Arizona is The Nation's Oldest Mexican Restaurant in continuous operation by the same family. Featuring traditional Northern Mexico-Sonoran style and innovative Tucson-style Mexican Food, El Charro Café is truly as Gourmet Magazine wrote: "A Taste Explosion."

Please bring additional money for lunch.



RCE Shuttle Excursions

Save gas and save the parking hassle: ride the RCE Shuttle to many exciting local events and area attractions. The RCE Shuttle will drop you off and pick you up at easy-access locations.

Sign up for these trips early! Space is limited to 12 passengers!

There is a \$5.00 fee pp for each shuttle adventure.

If your trip is over 100 miles, there will be a \$15.00 fee pp.

Masks are required on the shuttle.

Please note, no refunds will be given one week (7 days) prior to a shuttle where we have had to prepurchase tickets. This will be in effect starting January 1, 2022.



International Wildlife Museum

Jan 21 • 9:00 a.m. • Breezeway • \$5 Shuttle Fee • Tour \$7 at the door

Founded in 1988, the museum highlights over 400 species of insects, mammals and birds from around the globe. Some of the collections are more than 100 years old and all the animals found at the museum were donated by various government agencies, wildlife rehabilitation centers, captive breeding programs, zoos and individuals.

After you explore the Wildlife Museum, head over to one of RCE's favorite restaurant stops, Teresa's Mosaic Café.

Admission: \$7.00 (senior rate)

Please bring additional money for lunch.



Sonoran Glass Art School

Jan 24 • 12:15 p.m. • Breezeway • \$5 Shuttle Fee

Ticket \$40.00

Sonoran Glass School is a public-access educational organization dedicated to inspiring people of all ages to discover the wonder of glass art. Experience making glass art, firsthand. You will take part in a tour of the glass school, watch a glass blower firsthand and make your own glass sun catcher! Your safety comes first. They require that every student wear closed-toed shoes. Please wear comfortable, cotton clothes that you do not mind getting dirty. Depending on the class, students should also tie back long hair and avoid wearing dangling jewelry.

You will have worked up an appetite during your class, so you will head over to Bison Witches Restaurant for a gastronomy delight! Please bring additional money for dinner.



RCE Shuttle Excursions

Save gas and save the parking hassle: ride the RCE Shuttle to many exciting local events and area attractions. The RCE Shuttle will drop you off and pick you up at easy-access locations.

Sign up for these trips early! Space is limited to 12 passengers!

There is a \$5.00 fee pp for each shuttle adventure.

If your trip is over 100 miles, there will be a \$15.00 fee pp.

Masks are required on the shuttle.

Please note, no refunds will be given one week (7 days) prior to a shuttle where we have had to prepurchase tickets. This will be in effect starting January 1, 2022.



Gaslight Theater presents

Arizona Smith

Jan 26 • 6:00 p.m. • Breezeway • \$5 Shuttle Fee • \$25 pp

Join the Gaslight Theater crew as they dish up another adventure with their winter show, Arizona Smith. Based all around everyone's favorite hero, Indiana Jones, this comedy spoof will have you laughing in the aisles!

The Gaslight Theater is a MUST if you are in Tucson! Enjoy the evening with your RCE friends at one of Tucson's favorite venues.

You can purchase dinner while enjoying the show.



Quilt Show

Jan 28 • 9:30 a.m. • Breezeway • \$5 Shuttle Fee

One of the largest shows in the Southwestern United States, Quilt Fiesta 2022 showcases the fiber artistry of more than 300 quilters and celebrates the craft of quilting over three lively days of fun and inspiration. The event will feature demonstrations, vendors, and the 2022 Raffle Quilt. A special Kids Row will be held again this year. All demonstrations and speakers are free with admission to the show. Door prizes will be given out throughout the show. All paid admissions get a drawing ticket.

Admission: \$10.00 per person



January



Farmer's Market & Craft Fair

Jan 4 & 18 • 10:00 a.m. - 1:00 p.m. •

Breezeway and Rec Hall

We welcome back all of our wonderful vendors for the 2021-2022 season! This season we will be hosting two Craft Fairs a month starting in November. We encourage everyone to come down to the Breezeway to check out local artwork, fresh fruits and vegetables, handcrafted jewelry and much more! If you are a resident who would like to host a table at the Craft Fair, please contact the Activity Office. Vendors will be placed in the Breezeway, and in the Rec Hall.



B - I - N - G - O

Jan 5 • 7:00 p.m. • Aud

You can't win if you don't play! Bring your money and your daubers. Card sales begin at 6 PM. Bingo starts at 7:00 PM.

Remember that our Bingo helpers and callers are volunteers. We ask that you please show kindness and patience with those volunteering their time so that RCE can hold Bingo each season.





It's All Greek to Me Toga themed Golf Cart Parade

Jan 6 • 2:00 p.m. • Breezeway

Join us in our first golf cart and bicycle parade of 2022! Each parade this season will be themed on one of our events and this month's parade is TOGA, TOGA, TOGA!! Decorate your bikes, your golf carts and yourselves for this fun parade through our resort. Prizes will be given for the best decorated bike/golf cart.

Not able to come along for the parade? Make sure that you step out onto your deck or in your carport to watch the parade pass by. We have been known to hand out candy to those watching and clapping!

Meet in front of the main office to join the parade. The parade begins at 2:00 PM.

Fork and Fire Food Truck will be here after the parade so make sure to come on out and support local businesses while enjoying some great dinner!



It's All Greek to Me Toga with the Hardscrabble Road Band

Jan 7 • 7:00 p.m. • Aud • \$10

In the famous words of John Belushi, TOGA, TOGA, TOGA!

Who doesn't love a good old toga party?! What other type of party do you get to roll out of bed, while wearing the bed!

Come along with us as we travel to Greece for our "It's All Greek to Me" toga party with the awesome Hardscrabble Road Band. This is a BYOS (Bring Your Own Sheet) party where you will dance the night away with your RCE friends.

HAPPY NEW YEAR

January



Walk About Sale

Jan 8 • 7:30 a.m. - 12 Noon

One person's junk is another person's treasure! If you have some items that you would like to sell, this is the time to do it! Make sure to come to the Activity Office beforehand to fill out an index card for display, telling people your lot number and some idea of what you are selling.

HERE'S THE SCOOP!



Shuffleboard Second Sundaes

Jan 9 • 1:00 p.m. • Aud • \$5.00

Come out and support your Shuffleboard club and eat yummy ice cream at the same time! The Shuffleboard Club will be offering ice cream with toppings such as homemade hot fudge, and much more. Join your RCE friends for a great Sunday afternoon event while supporting your Shuffleboard club. Tickets available in the Activity Office.



Brown Bag Lunch

Jan 11 & 25 • 11:30 a.m. • Aud

The Brown Bag Forum is a popular, informal come-as-you-are event held every other Tuesday at 11:30 in the Auditorium, featuring a presentation on some subject of general interest. Attendees are encouraged to bring and eat lunch at the event, and to engage with the presenters.

On Tuesday, January 11, Dave Hartman, an expert on all sorts of old and new clocks, will present an interesting illustrated lecture called, "It's About Time."

On Tuesday, January 25, Steve Dell, an entertaining lecturer and longtime president of Tucson's biggest amateur photography club, will give an illustrated talk about travel photography; his talk will be co-sponsored by the Rincon Country East Photo Club.

No sign-up necessary, just show up with your lunch and have a great time!

January



Fantasy Copper Cuff

Jan 12 • 10:00 a.m. • Art Room • \$45.00

We welcome Gale from Cactus Wren Artisan Studio, who will be teaching a Copper Cuff class! Gale has taught classes in Tucson for over 5 years and displays her own work in two galleries locally. Gale was honored by receiving the Worldwide Who's Who, 2013 Entrepreneur of the Year representing the Jewelry Design Industry.

She is very excited to bring her instruction to Rincon Country. Make sure to sign up in the Activity Office for this awesome class before she sells out. The class will be 3-4 hours and Gale recommends that you bring a lunch or snack along.



Meet the Clubs Night

Jan 13 • 6:00 p.m. • Aud

Come along and learn all about the various clubs and activities on offer at RCE! Please join us to find a new sport to try, a new craft to learn, or a group that shares your passion for your favorite activity. Come down to the Auditorium to meet your neighbors and learn about what clubs people are involved in.

We will also have Ciao Down Pizza Food Truck available from 4:30 - 7:00 PM.



Ben's Bikes of Tucson

Ben's Bikes will be here for all of your biking repairs, to answer questions and to share their biking knowledge with RCE residents. **They will be in front of the Breezeway on the following dates:** Jan 14, Feb 11, Mar 11 from 9:00 a.m. - 12:00 p.m.

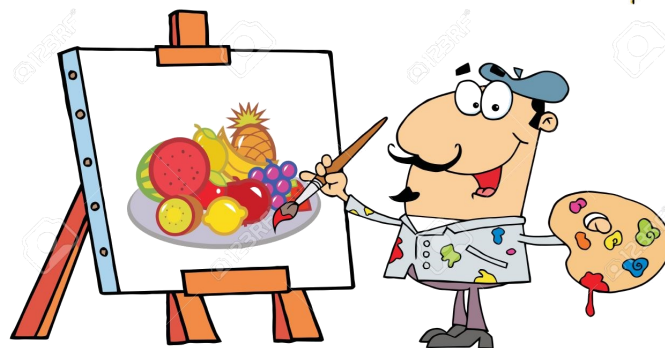
January



Foodie Club

Jan 14 • 10:00 a.m. • Kitchen • \$10 pp

Join the Foodie Club to learn how to make “Mom’s Bread and Butter Pickles.” Great on a burger, sandwiches or just to eat straight out of the jar. Wait until you taste them. You will love them! **Make sure to sign up in the Activity Office as this class has limited spaces.**



Painting with McKenna

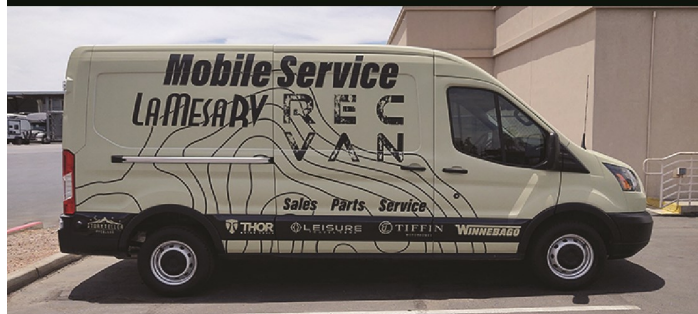
Jan 16 • 2:00 p.m. • \$20 pp

McKenna is an excellent instructor and will walk you through making this painting your own! This is a great time to incorporate fine art, fun and of course, friends! Please check the Activity Office for a picture of the art you will be painting.

All levels of artist (or non-artist) welcome! Please sign up in the Activity Office as this class has limited spaces.

NEED SERVICE, TUCSON?

We can help! Instead of pulling up camp, give us a call and we’ll send our mobile service van to your campsite.



Call to schedule! (833) LMRV-123
(833) 567-8123

\$149 trip charge plus
parts and labor
(plus \$1 per mile over 50 miles)

LAMESA RV
EXPERIENCE LIFE



Ping Pong Tournament

Jan 18 • 2:00 p.m. • Rec Studio

Calling all ping pong players. We are holding our first ever Rincon Country East ping pong tournament and welcome all players to join in the fun. You must be a resident at RCE to join. Please contact Larry Allen to sign up: 630-853-0955.



Sawmill Ham & Bean Soup Dinner

Jan 20 • 4:30 p.m. Happy Hour

5:00 p.m. Dinner Served • Aud • \$10 pp

Everybody loves the Sawmill's dinners and we kick off the New Year with their delicious Ham and Bean soup! They will serve the soup with cornbread and a dessert to follow the meal. Coffee will be available. Happy hour is at 4:30 p.m. and the meal will be served at 5:00 p.m. There will also be a 50/50 drawing after the meal. Make sure to get your tickets from the sawmill before they sell out!



Ladies Luncheon

Benefiting the

Southern AZ Children's Advocacy Center

Jan 22 • 11:00 a.m. • Aud

Join us in our annual Ladies Luncheon here at RCE. Each season we choose a local non-profit organization to support and this season we have selected the Southern AZ Children's Advocacy Center who work with children and young adults who have been through trauma or abuse in their lives.

We will travel to Italy for the luncheon. We will be asking that you provide a donation to the Advocacy center. The Activity Office has flyers on items that are needed by the center. We will also be holding a raffle at the luncheon. Lunch will be provided.

Please see Karen Clark, lot 231A for your ticket to the event or you can also purchase tickets at Wednesday coffees.



SkyMed Seminar

Jan 26 • 10:00 a.m. • Rec Hall

Enjoy a sub sandwich and emergency transport services info!

This New Year, resolve to include a SkyMed membership to TAKE YOU HOME when hospitalized. Wherever you may be or however you may travel, SkyMed is there for you.

SkyMed, number one in medical evacuation services, provides emergency medical transport to take you to your own doctor, hospital, and family. Also returns your RV and pets, brings a visitor to you, plus many more services.

Sign up in the RCE Activity Office for food count or contact Jerry and Marilyn Collins, SkyMed Reps at 208-867-8739 for more information or an appointment.



Astronomy Club Chili Feed and Horseraces

Jan 28 • 5:00 p.m. • Aud • \$10

You are all invited to our annual Chili Feed and Horseraces! Chef Dennis prepares a choice of mild, spicy or vegetarian chili with all the fixin's: onions, cheese, crackers, cornbread muffins and dessert. BYOS and BYOB.

There will be a silent auction for our six horses. The sign-up sheets can be found in the Activity Office daily, and in the Rec Hall on Wednesdays where you can bid one of six horses to buy, decorate and enter in the race. All of the money collected from the horses goes back to the owners when they win. We will be auctioning off our box seats at coffee on January 26. The box seat owners get a concierge that works just for you, she brings your food to you, she bids for you, and delivers your winnings. At the derby, everyone has the opportunity to bet on each race. Tickets available through the Astronomy Club members, at Unit 366, Judy Sinkular or 129, Dennis Bonnville. Get ready, get set and let's go to the races.

January



Get Your Groove On Woodstock themed Dance with Five Way Street Band

Jan 29 • 7:00 p.m. • Aud • \$10

Travel with us to Woodstock for this groovy dance man! The Five Way Street Band are totally *Out of Sight* and you will love all of the groovin' tunes!

We welcome the Five Way Street band to Rincon Country! Playing a wide variety of music for you, this will be a band that you will never forget!

It's gonna be a total bummer if you don't come along daddy-o! So throw on those bell bottoms, pull out the tie dye and head down to the Activity Office for your tickets.



News 4 Less
Arizona Daily Star

#1 Source of Information in Southern AZ

\$15 per mo. 7 day per wk. delivery

\$10 per mo. Wed and Sun only

*All premium issues and full online access included
6 mo. rate guarantee, cancel any time*



For details call Authorized Agents

Martha or Linda

at (520) 278-4613

or email: news4lessazstar@gmail.com



...VEHICLE NEED CARE OR REPAIR?

Hello neighbor, Several in our family live in Rincon West. My wife and I also have a unique automotive service business 12 minutes away. We offer a wide variety of automotive care, repair and services.

We Buy Autos



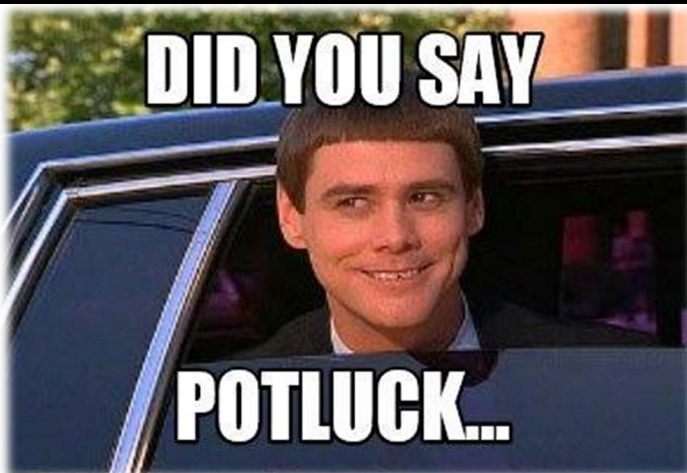
We will assess your functional concerns with skill and honesty, and quote a price that is lower than most shops. And if you have cosmetic issues on the interior or exterior that you would love to have beautified, we have effective, affordable solutions.

Golden-Rule-Automotive.com

Call or text Rick at: **520-488-5534**



Golden Rule Automotive



Rincon Country East State Potlucks

Wisconsin & Michigan Potluck

Jan 10 • 4:30 p.m. • Aud

Sign up in the Activity Office by Monday, January 3 and list the dish that you are bringing to share. BYOS and BYOB. Once again, we are requesting a \$2.00 donation for each person attending as you will receive two tickets for our raffle. Additional tickets can be purchased for \$1.00 each. Happy Hour is 4:30 - 5:00 p.m.

We will eat dinner at 5:00 p.m. with the raffle to follow. If you have any questions, please contact Mark or Sue Martin, #449.

Midwest Potluck

Jan 24 • 4:30 p.m. • Aud

Come along for our annual Midwest States Potluck! Make sure to sign up in the Activity Office.

BYOB and BYOS (Bring Your Own Service).

Can't wait to see all of our Midwest Friends!

If you have any questions, please contact Judy Ragan at lot #111.

Rocky Mountain Potluck

Jan 17 • 4:30 p.m. • Rec Hall

Welcome to all you folks who call the Rocky Mountain states home to the Rocky Mountain States Potluck Dinner.

Please sign up in the Activity Office, and let us know if you are bringing a main dish, salad, bread or dessert.

Bring your own service and any beverage that you might like. We look forward to seeing old friends and welcoming new ones!

For questions, please contact Sue Robertson, #153.

Minnesota, North Dakota, South Dakota

Potluck

Jan 31 • 4:30 p.m. • Aud

Please sign up in the Activity Office and tell us what you plan on bringing to this awesome potluck!

We will start with a social hour at 4:30, have our potluck at 5:00 and end with a 50/50 drawing.

BYOS and BYOB (coffee, tea, ice and water will be provided).

If you have questions, please contact Kevin & Cindy Heap, Lot 106.

FEBRUARY

SHUTTLES

We have some awesome shuttles coming up in February and are happy to take you there and home again with no hassle for parking! Sign up in the Activity Office.

Tuesday, February 1: Sabino Canyon

Thursday, February 3: Desert Art Museum

Saturday, February 5: Ignition Sign Art Museum

Tuesday, February 8: Tucson Gem Show

Thursday, February 10: Tubac Art Festival

Saturday, February 12: Tucson Symphony Orchestra presents *Empire Strikes Back*

Sunday, February 15: Gardener's World

Thursday, February 17: Beer Shuttle

Saturday, February 19: Cruise, BBQ and Blues Show

Tuesday, February 22: Pima Air and Space Museum

Thursday, February 24: Wayne's Toys Car Museum

Saturday, February 26: Southern Arizona Transportation Museum

Sunday, February 27: Roadrunners Ice Hockey Game

We are so lucky to have the Rincon Country shuttle bus and love offering different adventures for you throughout the season.

All shuttle trips have a \$5.00 shuttle fee. If traveling over 100 miles round trip, there is a \$15.00 shuttle fee. Please note, you can only sign up yourself and partner/guest per shuttle. You cannot sign up additional residents.

Only residents of Rincon Country can ride the shuttle at this time. Masks are required.

FEBRUARY

Get Your Tickets Starting Thursday, January 27 !

We have some awesome events coming soon and want to make sure that you know all about the fun!

February 4: *Jungle Boogie Dance with the Jukebox Junquies*

February 5: *Sonoran Dogs Bluegrass Band Performance*

February 10: *Sawmill Club Beef on a Bun Dinner*

February 12: *Mica Mountain High School Orchestra Performance*

February 13: *Shuffleboard Second Sundae Ice Cream Social*

February 14: *Showtune Production presents The Best of Broadway performance*

February 18: *Lapidary presents Jerry and Judy Musical Performance*

February 26: *Southern Ho-Down with the Hillbilly Deluxe*

February 28: *Bad News Blues Band Performance and Dance*

The Bulletin Board

Bulky Item Pickup!



Please sign up in the front office for this service. It will cost \$25.00 for the pick up. We will have this service the first Thursday of every month during the season. Please do not leave large items out by the dumpsters or throw items over the fence into the wash.



I'm OK

The "I'm Okay Club" is a program for guests and residents who are living alone. This is a daily check-in by phone that allows us to make sure you are OK. Please stop by the Activity Office to sign up. We look forward to seeing you.



AED Device

We have one Automated External Defibrillator (AED) device. The device is located in the Breezeway near the Office.



Safety from Wildlife

The weather is cooling and this is a time when rattlesnakes might seek the warmth of a cozy asphalt street after sundown. For maximum safety carry a flashlight when you are walking at night, keep pets on a leash, and remain alert to an unlikely, but possible, encounter.



All dental procedures are performed by
a specialist in the area



Powerful Smile Waiting For You!

Chat with us
☎ (520) 216-8168

*3D Scan Diagnosis &
CAD-CAM Technology

*Digital Dentistry
& Top Brands



*All the Technology For a
Perfect Placement Of
Implants!*



We accept most dental insurances

Call us and check your insurance coverage in Mexico without cost.



Oral Rehabilitation

Dental Implants

Periodontal Treatment

Gum Surgery

Scaling and Root Planning

Shuttle Service!

Ask us about **FREE**
Transportation from **Tucson,**
Green Valley & Sahuarita

***May Apply Restrictions

straumann Dental Implant
\$800

*Ask about the price of the different
rehabilitation procedures according to
your need.

**Zirconia, e-max, Porcelain Metal,
Full Denture & All-On-4**

***VALID UNTIL APRIL 30TH, 2022. Cash only, Please bring coupon to receive
this offer. Not valid any other offers.



Contact Us At

USA (520) 208-6001 / (520) 223-4332

Mex.+52 (631) 312-8746

We are located half-block from the border!

Pesqueira #40-C Fundo Legal, 84030, Nogales, Sonora, Mexico

smiledentalnogales.com

Follow Us    
SmileDentalNogales