

February 2022
Volume 48
Number 5

Villager



Office: 520-886-8431
www.RinconCountry.com

Rincon Country® East RV Resort
8989 E. Escalante Rd. Tucson, AZ 85730

The East

Lovin' life at Rincon Country

Coming to RCE This Month



Showtune Productions presents

The Best of Broadway

Feb 14 • 7:00 p.m. • Aud • \$17.50

Celebrate Broadway's greatest hits featuring four powerhouse vocalists and a live band. Showtune Productions presents another top class night of entertainment with songs from your favorite Broadway musicals such as Jersey Boys, Mama Mia, Carole King's Beautiful, Rodgers & Hammerstein, Lerner & Loewe, Andrew Lloyd Webber and much more!

Showtune Productions is one of RCE's favorite entertainment companies in Arizona and we are thrilled to welcome them back again this season!



Southern Ho Down with

Hillbilly Deluxe

Feb 26 • 7:00 p.m. • Aud • \$17.50

These hillbillies bring the special style of entertainment to some of your favorite country songs, as well as hillbillifying some rock and pop tunes. You'll hear songs from Alabama, Garth Brooks, Charlie Daniels and The Who.

These songs will include the unique sounds of fiddle, accordion and the washboard. You'll meet the entire family and some crazy friends that will keep you laughing when you're not clapping your hands or stomping your feet.

So throw on your overalls and bring the moonshine, cause we're here for a good time. You don't want to miss this great group of talented musicians and entertainers!



Hello and Happy February !

****New Curbside Collection Program****

We are instituting a Curbside Collection program in an effort to eliminate unsightly items left in the Dumpsters areas and prevent the dumpsters from being filled with non-household trash. Residents are no longer allowed to leave items on the side of the Dumpsters or dump anything that will not fit inside a trash bag. Anyone caught dumping prohibited items will be in violation of the Rules & Policies of the Resort. We are providing this service as an alternative to residents having to take non-household trash to the landfill themselves.

Rincon Country will pick up, from in front of your unit, large items such as couches, stoves, mattresses, etc. This does not include items with freon such as refrigerators or ACs. Pick-ups start at \$25. Green waste will remain free of charge. Contact the office at 520-886-8431 to let us know what items are to be picked up.

Every Tuesday I spend time at Rincon East and am happy to answer any questions or concerns you may have. You can also reach me via email: wendy@rinconcountry.com. If you would like to meet with me, please email me ahead of time so I can give you the time that you need.

Have a wonderful and safe February!

Wendy Bykofsky

General Manager



**“Keepin’ You Posted” with the RCE
Post Office Team**

Hours: 9:00 AM - 1:00 PM

Monday through Saturday

**Closed between 9:30 - 10:30 AM to pick up mail
from main Post Office.**

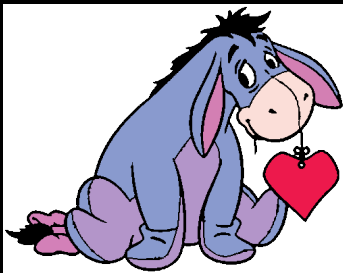
The PO has free Priority Mail boxes that can be taken to the main Post Office.

We sell first class stamps, post card stamps and Canada global stamps.

We will put a notice in your mailbox for packages that will not fit in the box itself. Packages can be picked up at the counter in the coffee room.

Have a wonderful season from your Post Office team!

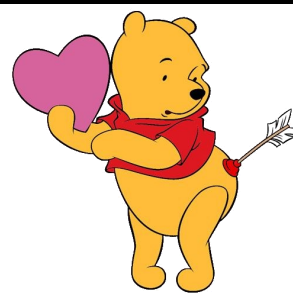
Terry, Tamara and Becky



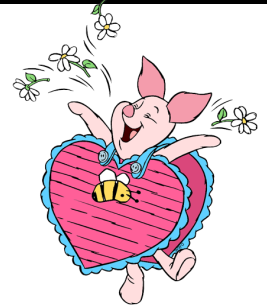
Jean



Sue



Terry



Shannon

“Acting Up” with the Activity Office

Welcome to February folks! We are so excited to offer you some top class entertainment this month.

Performances: We are excited to host the Sonoran Dogs Bluegrass Band, who are new to Rincon Country. They will be performing some of their own bluegrass hits as well as the classics. If you have been at Rincon Country in previous seasons, you will recognize the name “Showtune Productions.” JR and his team come down from Phoenix and offer the best of the best in the entertainment field. They will be performing “The Best of Broadway” this Valentines Day. Last but not least we are excited about Hillbilly Deluxe. This is a group of young musicians who play country and rock-n-roll in one of the most entertaining ways imaginable. You won’t want to miss these events!

Celebrations: Each season we celebrate the 50th wedding anniversary of our residents. This is such a beautiful event and how better than to celebrate your milestone with your Rincon Country family?

Dances: We welcome one of the hottest bands in Tucson, the Jukebox Junqies. The Junqies bring a mix of 50’s through the 80’s with some country thrown in for our two steppers and line dancers. We also welcome these newcomers to the park: the Bad News Blues Band who are nationally known for their awesome blues tunes.

Club Events: 1) Lapidary brings us the awesome Judy and Jerry, who have been entertaining all over the country with their Rock n Roll 50’s and 60’s show. They are great performers and Jerry plays a mean guitar! 2) The Sawmill will host their second dinner of the season with their BBQ sandwich meal. 3) And who doesn’t love ice cream? The Shuffleboard club will be holding their monthly Second Sundae ice cream social. What a great place to enjoy ice cream and meet new friends.

State Potlucks: Calling all Western States, Eastern States, Canadians and Orphan States folks! It’s time for your potlucks. Bring your favorite dish and enjoy a meal with old and new friends from your home states. Please sign up in the Activity Office.

Shuttles: We always have exciting shuttle adventures here at Rincon Country and still have some seats available for our February shuttles. The Activity Office has a full list of the shuttles and encourages you to hop aboard our shuttle for a toured adventure. Why drive when we can do that for you?!

Have a wonderful February and we look forward to entertaining you!

Your Activity Office Team, Shannon, Sue, Jean and Terry



“Keepin’ Up Appearances” with the Maintenance Team

Happy February everyone!

We have been working hard on repaving the road outside of the Post Office. We know there have been some concerns about the loose gravel and we hope that you notice a big difference with the new paving.

We have also put the pole back up in the dumpster area. The cameras are all operational now. As a reminder, please do not put bulk items in the back dumpster area. We offer a Brush and Bulky within the park and ask that you utilize this service as opposed to placing unwanted items where they do not belong.

We have also fixed the security lighting in the storage area and hope this will “shed some light” and ensure your safety in that area.

We are always around to help if needed. Please have a safe and wonderful February.

Your Maintenance Team,
Neil, Randy and Dan



Speed Limit

Please observe the 10-mph speed limit inside the park.



“Checkin In” with the Front Office

Wow, did someone say its February?? Where did January go....! As you know, February will be our busiest month of the season so let’s all remember to welcome our guests and make memories that are sure to last. Some quick reminders to help you keep this short month smooth riding are:

*Have you wondered where you can recycle your glass products now? Look no further than the Miller/Golf Links Library glass recycling drop off area. Just a hop, skip and drive down the road...

*Masks are still required in all Rincon Office Buildings until further notice. A Big Thank you for all your help and cooperation with keeping each other safe and healthy.

* Empty Sites are soon to be Filled Sites—Please park only in your own approved driveway or obtain a parking permit from the Office for overflow parking.

Enjoy your February!!

Your Front Office Team,

Joanne, Jasmine, Tamara and Kathy

For Club Leaders

The East Villager

Submissions

Club leaders may now submit articles for "The Villager" online:

shannon@rinconcountry.com

Please observe the following guidelines for submitting articles for *The Villager*. **The deadline for the monthly Villager is the 5th day of the month prior to issue date.**

For example, the deadline for the March Villager is February 5.

Include times, dates, room locations, and contact names and numbers. Please do not **bold**, underline or use ALL CAPITALS.

Please keep articles to 150 words or less.



Bulletin Boards

The bulletin boards outside the Activity Office are for activity-related events. If you or your club would like to post something on this board, it must be approved by the Activity Office. Approved announcements will be posted once a week. To be sure we have room for all clubs, please keep your announcement to 1/2 page or smaller.

ACTIVITY OFFICE HOURS

Monday through Friday
9:00 am - 4:00 pm

Closed Saturday & Sunday

Tel: 520-296-4651

Guess the Country



Wednesday Morning Coffee & Donuts

To go along with our travel theme this season, each monthly newsletter will contain pictures of various items from a certain country and will ask, "How well travelled are you?" If you know the country represented by the items pictured, come into the Activity Office and put the name of the country on a piece of paper and put it in our "Guess the Country" box for your chance to win a free ticket to one of our events! We will pick the winner at the first coffee of each month! **You need to be present to win.**

Make sure to join us for a free donut and cup of coffee in the Auditorium on Wednesday mornings. Bring your own mug, and we will fill it up with hot coffee (regular or decaf) or hot water for tea. Please enter through the Rec Hall and select a donut or a piece of fruit.

We'll give you important park news hot off the press, and there will usually be a brief message from our coffee sponsor. Doors open at 8:30 am. Coffee and donuts will be served and our program begins at 9:00. See you there!

February Coffee Sponsors:

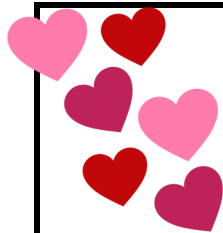
Feb 2: Right Choice Cabinetry

Feb 9: Tucson Golf Cars &

Every Inch RV Inspection

Feb 16: Freedom RV

Feb 23: Mooney Insurance Company



Please note, no refunds will be given one week (7 days) prior to a shuttle where we have had to prepurchase tickets. This will be in effect starting January 1, 2022.

RCE Shuttle Excursions

Save gas and save the parking hassle: ride the RCE Shuttle to many exciting local events and area attractions. The RCE Shuttle will drop you off and pick you up at easy-access locations.

Sign up for these trips early! Space is limited to 12 passengers!

There is a \$5.00 fee pp for each shuttle adventure.

If your trip is over 100 miles, there will be a \$15.00 fee pp.

Masks are required on the shuttle.



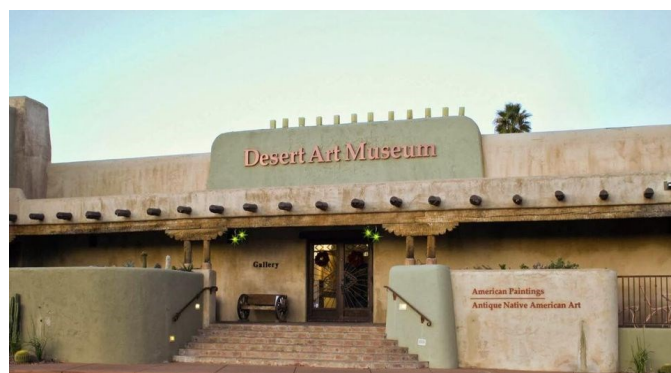
Sabino Canyon with lunch at Risky Business

Feb 1 • 10:00 a.m. • Breezeway • \$5 Shuttle Fee

Come to Sabino to see water in the desert. Between steep rock cliffs and unique desert vegetation you will find riparian corridors. You may even get lucky and view a gila monster, bobcat, or other animals that have been able to adapt to our 100 + degree summers and mild winters. Many local people call Sabino Canyon their second home.

The canyon itself has been closed to private vehicles since 1978. However you can still visit Sabino Canyon in an emission-free, open-air Sabino Canyon Crawler or Bear Canyon shuttle. Along the 1-hour round trip route for Sabino Canyon enjoy an audio tour or get off at one of the nine shuttle stops. The Bear Canyon route is 30-minutes round trip and has three stops.

You will work up an appetite on your adventures today, so will enjoy lunch at Risky Business with your RCE friends. **Please bring additional money for tram and lunch. Entry Fee: \$8.00 pp.**



Desert Art Museum with lunch at Poco and Mom's Cantina

Feb 3 • 10:00 a.m. • Breezeway • \$5 Shuttle Fee

At the core of the Museum is one of the Southwest's premier collections of Navajo and Hopi pre-1940s textiles, including displays of chief's blankets, Navajo saddle blankets, optical art textiles and Yei weavings.

Nowhere else will the visitor find such an eclectic array of southwestern art and artifacts. Their motto is "visualize history through art." Guests are invited to immerse themselves in history through the beautiful art!

Admission \$8.00 Seniors

After enjoying your day at the museum, join your Rincon friends for lunch right next door at Poco and Mom's Cantina. **Please bring additional money for lunch.**



RCE Shuttle Excursions

Save gas and save the parking hassle: ride the RCE Shuttle to many exciting local events and area attractions. The RCE Shuttle will drop you off and pick you up at easy-access locations.

Sign up for these trips early! Space is limited to 12 passengers!

There is a \$5.00 fee pp for each shuttle adventure.

If your trip is over 100 miles, there will be a \$15.00 fee pp.

Masks are required on the shuttle.

Please note, no refunds will be given one week (7 days) prior to a shuttle where we have had to prepurchase tickets. This will be in effect starting January 1, 2022.



Ignite Sign Art Museum

Feb 5 • 9:30 a.m. • Breezeway • \$5 Shuttle Fee

Ignite Sign Art Museum opened in October 2018 with the mission of preserving and restoring historically significant signs. More than twelve Arizona roadside signs have been rescued and saved from destruction and are now in the museum, along with others from the Southwest and Midwest. There are over 350 signs and items on display. They have also restored 23 historic neon signs from the Tucson area that are being enjoyed by the community at large and visitors to the area.

After touring the museum, we will stop at Rocco's Little Chicago for lunch with friends. This restaurant was featured on Guy Fieri's Diners, Drive-Ins and Dives.

Please bring additional money for lunch.



Gem & Mineral Show

Feb 8 • 10:00 a.m. • Breezeway • \$5 Shuttle Fee

Tucson becomes a playground for the world of international gem and mineral collecting and selling when the Tucson Gem, Mineral & Fossil Showcase arrives in January-February every year. The showcase is more than just one show.

It takes place at multiple locations focused mainly in downtown-midtown Tucson. Treasure hunters from near and far come to hunt for jewelry, track down jewelry-making supplies, and browse collectibles and treasures, both rare and bargain priced.



RCE Shuttle Excursions

Save gas and save the parking hassle: ride the RCE Shuttle to many exciting local events and area attractions. The RCE Shuttle will drop you off and pick you up at easy-access locations.

Please note, no refunds will be given one week (7 days) prior to a shuttle where we have had to prepurchase tickets. This will be in effect starting January 1, 2022.

Sign up for these trips early! Space is limited to 12 passengers!

There is a \$5.00 fee pp for each shuttle adventure.

If your trip is over 100 miles, there will be a \$15.00 fee pp.

Masks are required on the shuttle.



Tubac Art Festival

Feb 10 • 9:00 a.m. • Breezeway • \$15 Shuttle Fee

Tubac's Festival of the Arts is the Southwest's longest running arts festival, drawing tens of thousands of visitors each year. The festival runs concurrent with Tucson's internationally renowned Gem & Mineral Show which draws visitors from around the globe. Many Tucson visitors make both the Gem & Mineral show and the Festival of the Arts their destination. Highlights of the Festival include more than 250 fine artists and craftsmen, a large assortment of festival eateries, live entertainment, and a wine and beer garden. The artists are integrated throughout the village, along roadways and plazas, and among more than 125 art galleries, boutiques, specialty shops and restaurants – providing one of the most beautiful and unique Festival settings in Arizona!

Shuttle: \$15.00 shuttle fee



Tucson Symphony Orchestra presents *The Empire Strikes Back*

Feb 12 • 3:00 p.m. • Breezeway • \$5 Shuttle Fee

Ticket \$25.00

Tucson Symphony Orchestra is thrilled to perform "Star Wars: The Empire Strikes Back" in concert, playing every note of **John Williams'** music as the film in its entirety is projected above on a giant screen. In 2018 Tucson Symphony Orchestra performed *Star Wars: A New Hope*, the first of the films to be made. Now Tucson audiences can experience the second film of the original trilogy.

"You must feel the Force around you..."

The battle for the galaxy intensifies in this thrilling fifth-episode of the unfolding saga. As Imperial Forces launch an all-out attack on the Rebel Alliance, Han Solo and Princess Leia flee to Cloud City where they are captured by Darth Vader. Luke Skywalker journeys to the mysterious, marshy planet of Dagobah, where the wise Jedi Master Yoda teaches the young hero the ways of the Force. **Tickets: \$25.00 pp.**



RCE Shuttle Excursions

Save gas and save the parking hassle: ride the RCE Shuttle to many exciting local events and area attractions. The RCE Shuttle will drop you off and pick you up at easy-access locations.

Sign up for these trips early! Space is limited to 12 passengers!

There is a \$5.00 fee pp for each shuttle adventure.

If your trip is over 100 miles, there will be a \$15.00 fee pp.

Masks are required on the shuttle.

Please note, no refunds will be given one week (7 days) prior to a shuttle where we have had to prepurchase tickets. This will be in effect starting January 1, 2022.



Gardener's World Tour

Feb 15 • 10:00 a.m. • Breezeway • \$5 Shuttle Fee

Whether you have a green thumb or you just enjoy looking at the beautiful plants that thrive in the desert, this will be a great shuttle to explore all things green! We will start at the awesome Mesquite Valley Growers. This nursery is full of every type of plant that you can imagine and there are fantastic garden decorations for every size of garden space!

After Mesquite you will travel to B&B Cactus Farm. This cactus farm offers a huge selection of cactus and succulents, also many other desert plants. They also have a wide array of pottery and garden art to choose from. You will have worked up an appetite by now, so head on over to have a late lunch at Saguaro Corners Patio. They have a great menu to choose from including a long list of locally brewed beers! **Please bring additional money for lunch.**



Beer Shuttle

Feb 17 • 3:30 p.m. • Breezeway • \$5 Shuttle Fee

Join us as we visit three local breweries in Tucson. Starting with the Harbottle Brewery, then Copper Mine, and ending at a local East Side brewery, The Black Rock. You will have a great time enjoying local beers and food with your Rincon Country friends. From beers such as the Honey Bunny, Straw Fedora and Snow Shoes, this shuttle will have your taste buds on a great adventure around the Southwest.

Please bring additional money for food and beverages

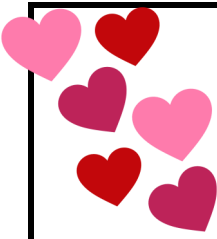
Cameron's Reliable Maintenance Services

(520) 490-7632

Kenneth Cameron - Owner, Operator

RV REPAIR • PARK MODELS • MOBILE HOMES
HEATING • COOLING • ELECTRICAL • PLUMBING

COMMERCIALLY INSURED
24 HOURS / 7 DAYS



RCE Shuttle Excursions

Save gas and save the parking hassle: ride the RCE Shuttle to many exciting local events and area attractions. The RCE Shuttle will drop you off and pick you up at easy-access locations.

Sign up for these trips early! Space is limited to 12 passengers!

There is a \$5.00 fee pp for each shuttle adventure.

If your trip is over 100 miles, there will be a \$15.00 fee pp.

Masks are required on the shuttle.

Please note, no refunds will be given one week (7 days) prior to a shuttle where we have had to prepurchase tickets. This will be in effect starting January 1, 2022.



Cruise, BBQ and Blues Festival

Feb 19 • 9:30 a.m. • Breezeway • \$5 Shuttle Fee

This car show event invites thousands of people out to rev up the weekend with live oldies music and great food. With over 30 different classes of auto awards given in Best of Show, Best Interior, Best Paint, Best Engine and People's Choice.

The one-day event will feature live Blues music on the main stage, classic BBQ on the grill, and an endless supply of everything we have come to love about fast cars and classic autos!

All monies raised at the event will go directly to support Southern Arizona Art Council community arts and cultural outreach programs throughout the State.

\$5.00 ticket at the event. Please bring additional money for beverages and food.



Pima Air and Space Museum

Feb 22 • 1:00 p.m. • Breezeway • \$5 Shuttle Fee

The Pima Air & Space Museum is one of the largest non-government-funded aviation and space museums in the world! Featuring over 350 historical aircraft, from a Wright Flyer to a 787 Dreamliner. Sitting on 80 acre the museum opened its doors to the public in May of 1976. Over the past forty years, the museum has grown immensely and today encompasses six indoor exhibit hangars (three dedicated to WWII).

Join RCE on this awesome shuttle adventure to the Pima Air and Space Museum!

Admission: \$15.75 senior rate.

Tram Tour: \$8.00 per person.



RCE Shuttle Excursions

Save gas and save the parking hassle: ride the RCE Shuttle to many exciting local events and area attractions. The RCE Shuttle will drop you off and pick you up at easy-access locations.

Sign up for these trips early! Space is limited to 12 passengers!

There is a \$5.00 fee pp for each shuttle adventure.

If your trip is over 100 miles, there will be a \$15.00 fee pp.

Masks are required on the shuttle.

Please note, no refunds will be given one week (7 days) prior to a shuttle where we have had to prepurchase tickets. This will be in effect starting January 1, 2022.



Wayne's Toys Museum with lunch at Bison Witches

Feb 25 • 10:30 a.m. • Breezeway • \$5 Shuttle Fee

Join us for a private tour at Tucson Auto Museum! Most everyone remembers their childhood family car; family driving vacations; that first really cool sports car they ever saw and drooled over; the car they learned to drive in and others from our past that we just feel connected to.

The mission at the Tucson Auto Museum is to showcase the very old (our Model T just celebrated its 102nd birthday), the iconic (hard not to fall in love with our mid-century classic Cadillacs, Desotos, Hudsons and Packards), the sporty (picture yourself behind the wheel of one of our classic Corvettes, Thunderbirds, MGs or Triumphs), the unique (ever see a car with just one door—and it is in the front?!) and more. You can even go Back to the Future in our shiny, stainless steel Delorean.

Entrance Fee: \$10.00 per person. Please bring additional money for lunch.



Southern Arizona Transportation Museum

Feb 26 • 9:30 a.m. • Breezeway • \$5 Shuttle Fee

There is no way to understand the history of Tucson until you witness the incredible impact the arrival of the Southern Pacific Railroad had on, what was then (1880), a tiny, mostly Mexican village. There are both indoor and outdoor exhibits as well as interactive exhibits and audio phones.

This is also the place where Wyatt Earp and Doc Holiday dispatched Frank Stilwell, suspected of the ambush of Marshal Virgil Earp and the assassination of Marshal Morgan Earp, whose bullet-ridden body was found near where life-size statues of Wyatt and Doc stand today.

We will stop for lunch at Street Taco & Beer Co.

Admission is free. Donations are accepted. Please bring additional money for lunch.



RCE Shuttle Excursions

Save gas and save the parking hassle: ride the RCE Shuttle to many exciting local events and area attractions. The RCE Shuttle will drop you off and pick you up at easy-access locations.

Sign up for these trips early! Space is limited to 12 passengers!

There is a \$5.00 fee pp for each shuttle adventure.

If your trip is over 100 miles, there will be a \$15.00 fee pp.

Masks are required on the shuttle.

Please note, no refunds will be given one week (7 days) prior to a shuttle where we have had to prepurchase tickets. This will be in effect starting January 1, 2022.



TUCSON ROADRUNNERS

Roadrunners Hockey Game

Feb 27 • 3:00 p.m. • Breezeway • \$5 Shuttle Fee

Tickets \$30.00 pp

If you are a hockey fan, then this is the place to be! Join in the fun and watch the local AHL team play against the Ontario Reign! There is always a great time to be had at a Roadrunner's game! What could be better than hockey in the desert?

Game starts at 4:00 p.m.

Save the money you would pay for parking and let us take you in our shuttle! You will be sitting in the best seats in the arena!

Tickets are \$30.00 each.



Our awesome shuttle driver Bobby Marie on one of our shuttle trip adventures last season.

To Shuttle or Not To Shuttle...

That is the Question

Each season, RCE residents have the opportunity to go on adventures throughout Pima County on our very own shuttle bus. If you have never been on one of our shuttle experiences, here are a few reasons why you should take the shuttle plunge:

- * No worrying about driving to unfamiliar locations. Our amazing shuttle drivers will take you right to the door of your destination.
- * Parking is such a hassle. You don't have to worry about parking at all when you go on a shuttle!
- * Meeting new friends. The shuttle is a great way to meet other residents and have a great day out together!

If you have any questions about the shuttles or you have a shuttle idea yourself, make sure to come into the Activity Office to let us know.

February



Farmer's Market & Craft Fair

Feb 1 & 15 • 10:00 a.m. - 1:00 p.m. •

Breezeway and Rec Hall

We welcome back all of our wonderful vendors for the 2021-2022 season! This season we will be hosting two Craft Fairs a month. We encourage everyone to come down to the Breezeway and Rec Hall to check out local artwork, fresh fruits and vegetables, handcrafted jewelry and much more! If you are a resident who would like to host a table at the Craft Fair, please contact the Activity Office. Vendors will be placed in the Breezeway, and in the Rec Hall.



B - I - N - G - O

Wednesdays • 7:00 p.m. • Aud

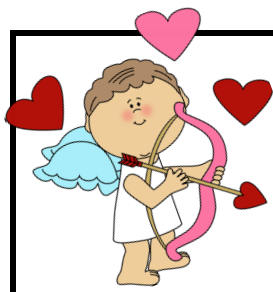
You can't win if you don't play! Bring your money and your daubers. Card sales begin at 6 PM. Bingo starts at 7:00 PM.

Remember that our Bingo helpers and callers are volunteers. We ask that you please show kindness and patience with those volunteering their time so RCE can hold Bingo each season.



Wednesdays • 5:30 p.m. • Kitchen • \$6

Don't forget to support your ceramics club every Wednesday at 5:30 p.m. at their weekly hot dog, chips, and soda dinner for only \$6.00. They also sell giant cookies for only \$1! Come to the kitchen for your dinner every Wednesday.



February



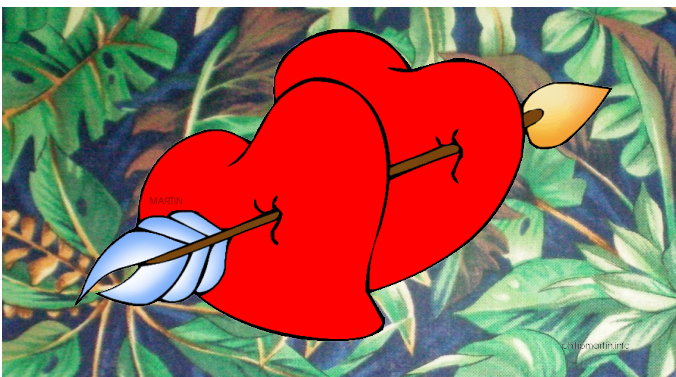
Jungle Boogie Dance with the Jukebox Junqies

Feb 4 • 7:00 p.m. • Aud • \$12

It's time to drag out those leopard and cheetah prints, folks, because we are travelling to the jungle this month! Come as Tarzan, Jane or how about a gorilla? This will be a night to remember for sure.

We welcome back the awesome Jukebox Junqies. Rincon Country loves the Junqies who play a variety of music from 50&60s all the way through the 80s and more with some extra country and western added in for our line dancers and two steppers.

Make sure to come in to the Activity Office to get your tickets for this jungle boogie event!



Sonoran Dogs Bluegrass Performance

Feb 5 • 7:00 p.m. • Aud • \$15

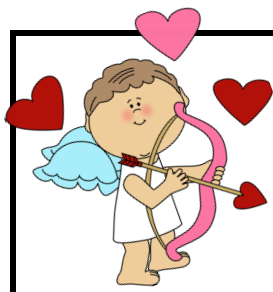
We are super excited to welcome the Sonoran Dogs Bluegrass Band to Rincon Country. This is the first time that they have performed with us and they can't wait to entertain us!

The "Dogs" are made up of seasoned veterans who have come together to enjoy bluegrass music and friendship., often times adding one or more "strays" on fiddle, dobro and even accordion!

With every show, The Sonoran Dogs play with expertise, often improvising and showcasing original songs, traditional and contemporary music, as well as an eclectic mix of Bluegrass, Folk, Americana, Celtic, and Newgrass.

If you're a music lover, you won't want to miss this show. Come out to the Activity Office 14 for your tickets today!





February



Brown Bag Lunch

Feb 8 & 22 • 11:30 a.m. • Aud

The Brown Bag Forum is a popular, informal come-as-you-are event held every other Tuesday at 11:30 in the Auditorium, featuring a presentation on some subject of general interest.

On Tuesday, February 8, Steve Dell, an entertaining lecturer and longtime president of Tucson's biggest amateur photography club, will give an illustrated talk about travel photography; his talk will be co-sponsored by the Rincon Country East Photo Club.

Tuesday, February 22, Katherine and Rodrick Pingree will give what will most certainly be an interesting presentation about their recent trip to Puerto Rico. In keeping with the current Pima County health mandate, we encourage everyone to wear your face mask to these indoor events.



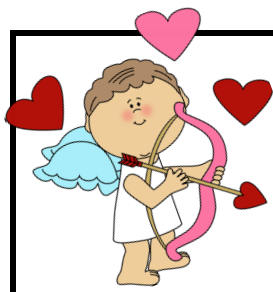
Sawmill BBQ Sandwich Dinner

Feb 10 • 5:00 p.m. • Aud • \$10

A big thank you to residents who supported our Ham and Bean Soup dinner and made it our usual success. Be sure and get tickets for our B.B.Q. sandwich dinner held on February 10. A great value for \$10.00.

Sawmill members are very active, producing some wonderful craft items. Our annual "Open House" will be on February 16 after coffee. Everyone is welcome. A great display may even have you joining the club and learning skills you didn't know you possessed. We are looking forward to being your hosts.





February



Skymed Seminar

Feb 11 • 10:00 a.m. • Aud

Give a valuable Valentine's gift!

Join us for pastries and fruit on Feb 11.

For your (and your loved ones) peace-of-mind, should you suffer a critical illness or injury, SkyMed **TAKES YOU HOME**. Plus your companion, RV, auto, pets, or mortal remains.

In addition to 18 enhanced services, the SkyMed-22 Stimulus program from Jan. 1 to Dec. 31, 2022, offers the following bonuses:

- ♦ All current and new members: Current membership price guaranteed for life
- ♦ New and renewing members and referrals: Up to 22 FREE weeks added onto plans
- ♦ "Thank You For Your Service" expanded to include military, firefighting, medical, or law enforcement affiliation.
- ♦

Please sign up in the Activity Office or contact Jerry & Marilyn Collins, SkyMed Reps, at 208-867-8739 or jerry.collins@skymed.com for food count.

Member Appreciation Luncheon: Sign up at SkyMed.com, click on *Appreciation Event*, select location, and complete your information.



RCE Resident Ruthe Fox's

100th Birthday Party

Feb 12 • 12:00 - 2:00 p.m. • Aud

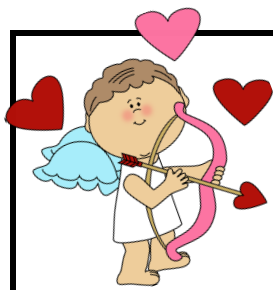
Ruthe is celebrating her 100th birthday and welcomes all residents to celebrate with her. Light lunch will be provided. Please sign up in the Activity Office.



Walk About Sale

Feb 12 • 7:30 a.m. - 12 Noon

One person's junk is another person's treasure! If you have some items that you would like to sell, this is the time to do it! Make sure to come to the Activity Office beforehand to fill out an index card for display, telling people your lot number and some idea of what you are selling.



February



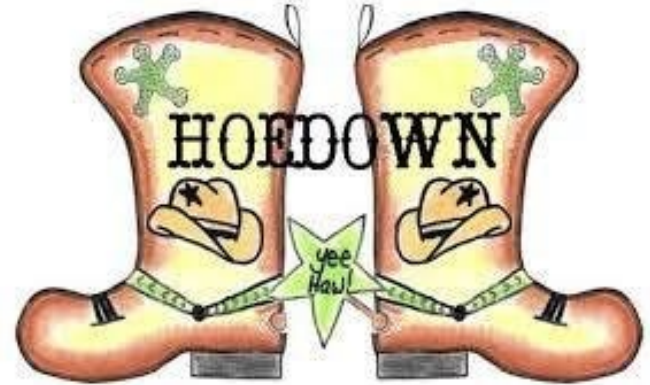
**HERE'S
THE
SCOOP!**



Shuffleboard Second Sundaes

Feb 13 • 1:00 p.m. • Aud • \$5.00

Come out and support your Shuffleboard Club and eat yummy ice cream at the same time! The Shuffleboard Club will be offering ice cream with toppings such as homemade hot fudge and much more. Join your RCE friends for a great Sunday afternoon event while supporting your Shuffleboard club. Tickets available in the Activity Office.



Southern Ho Down

Golf Cart & Bicycle Parade

Music by Cowboy Ted Moseman

With Wrapido Food Truck

Feb 17 • 2:00 p.m. • Breezeway

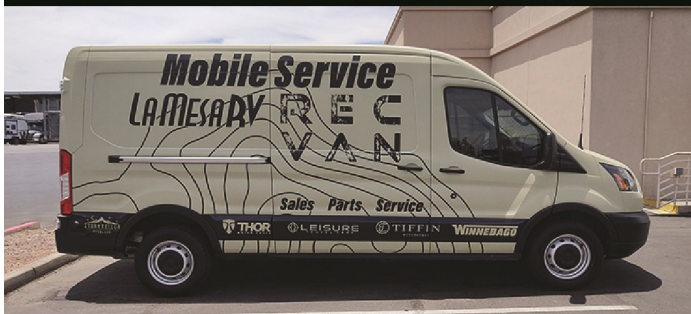
Join us in our Southern Ho Down golf cart and bicycle parade! Each parade this season will be themed on one of our events and this month's parade is all about the YEEEE HAW!! Decorate your bikes, your golf carts and yourselves for this fun parade through our resort.

Not able to come along for the parade? Make sure that you step out onto your deck or in your car port to watch the parade pass by. We have been known to hand out candy to those watching and clapping!

Meet in front of the main office to join the parade. The parade begins at 2:00 PM. We will also have country guitar player Ted Moseman who will entertain us after the parade as you enjoy food from Wrapido Chillin' and Grillin' Food Truck. This will be an afternoon of fun, music, good food and friends!

NEED SERVICE, TUCSON?

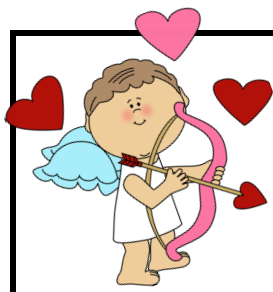
We can help! Instead of pulling up camp, give us a call and we'll send our mobile service van to your campsite.



Call to schedule! (833) LMRV-123
(833) 567-8123

\$149 trip charge plus
parts and labor
(plus \$1 per mile over 50 miles)

LAMESA RV
EXPERIENCE LIFE



February



Foodie Club

Decorated Gourmet Apples

Feb 18 • 10:00 a.m. • \$10 pp

Come along to this awesome and fun class where you get to work with RCE resident Paula Ross to make a delicious and beautiful decorated gourmet apples.

Make this for yourself or you can give it away as a gift. Please sign up in the Activity Office as this class has limited spaces.



Lapidary presents

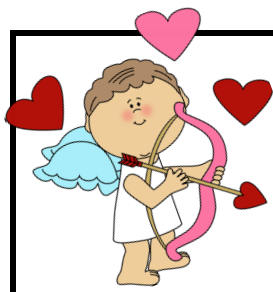
"Back to the 50's & 60's"

Feb 19 • 7:00 p.m. • Aud • \$10 pp

Come on out to support Rincon Country East Lapidary Club at their annual music event. This season they welcome Jerry and Judy Prunty with their "Back to the 50's & 60's" performance and dance!

Award winning entertainers Jerry and Judy Prunty have performed for 18 years at their own theater at Lake of The Ozarks resort area. They specialize in performing the fabulous rock 'n roll music of the late 50's and early 60's to include performers such as The Beatles, The Beach Boys, Roy Orbison, Elvis Presley, Fats Domino, Johnny Cash, Chuck Berry and much more!

Please see a Lapidary member for your tickets or come to Wednesday coffees and purchase tickets there. This will be a night of great music and fun friends while supporting Lapidary club.



February



Painting with McKenna

Feb 20 • 2:00 p.m. • \$20 pp

McKenna is an excellent instructor and will walk you through making this painting your own! This is a great time to incorporate fine art, fun and, of course, friends! Please check the Activity Office for a picture of the art you will be painting.

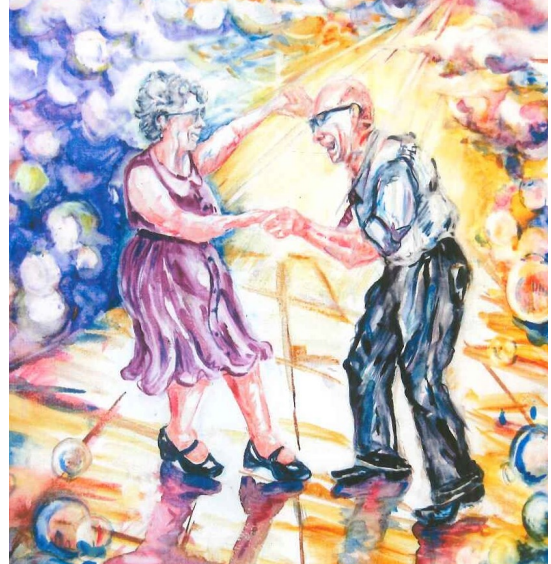
All levels of artist (or non-artist) welcome! Please sign up in the Activity Office as this class has limited spaces.



Ben's Bikes of Tucson

Ben's Bikes will be here for all of your biking repairs, to answer questions and to share their biking knowledge with RCE residents. **They will be in front of the Breezeway on the following dates:**

Feb 11, Mar 11 from 9:00 a.m. - 12:00 p.m.



50th Wedding Anniversary Party

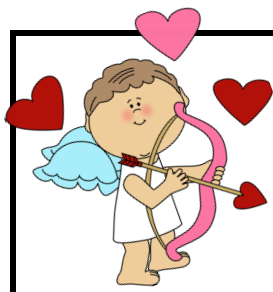
Feb 25 • 6:30 p.m. • Aud

Come along and celebrate the 50th wedding anniversaries of RCE residents! This is a wonderful event to celebrate love that has lasted 50 years!

Each couple celebrating the event will have a card box placed at the event and we welcome you to bring cards to wish our couples many happy years to come.

If you are a couple celebrating your 50th wedding anniversary, please make sure to contact the Activity Office by February 7th so we can celebrate with you. Please sign up in the Activity Office if you are an attendee.

We are always looking for volunteers to help with this awesome event and welcome you to join our 50th Wedding Anniversary Committee. Please see the Activity Office to volunteer.



February



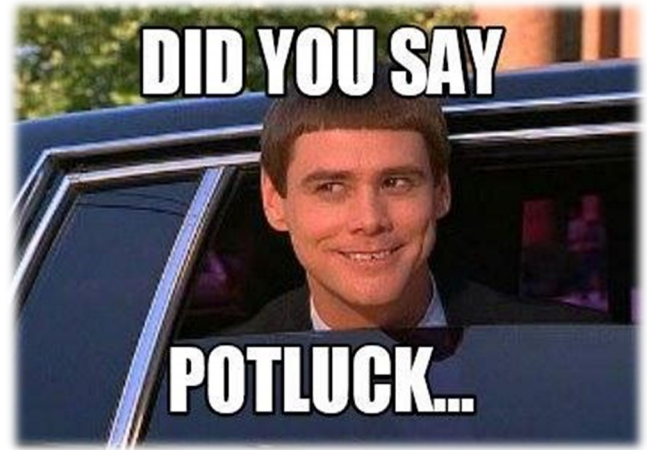
Bad News Blues Band

Feb 28 • 7:00 p.m. • Aud • \$15

Join RCE in welcoming one of the HOTTEST bands in Tucson! The Bad News Blues Band has been gaining a reputation for house-burning live performances all over the United States as well as Canada, Mexico, Turkey, Romania, Ireland, the U.K. and even Moscow, Russia!

In the 17 years since the band was formed they have won many local and regional awards, including first place in the 1997 and 2002 Arizona Blues Shootout. Winning the shoot out earned them a spot at the International Blues and talent competition in Memphis, Tennessee sponsored by the Blues Foundation. The band has the distinct honor of being the first blues band ever to be added to the artist roster for the Kennedy Center for Performing Arts.

This band is always on fire with a smoking hot rhythm section, sweet smoldering horns, blistering guitar, and an impressive frontline of dynamic vocals, that is sure to entertain!



Western States and Canada Potluck

Feb 7 • 4:30 p.m. • Aud

Are you from the Western States or Canada? Then you are invited to our annual potluck. We always have fun catching up with old friends as well as making new ones!

Please sign up in the Activity Office.

We will start at 4:00 and eat around 5:00 pm. Along with a dish to share, please bring a White Elephant Bingo gift.

BYOS, Lemonade and Tea will be provided.

Eastern States and Orphan States

Feb 21 • 4:30 p.m. • Aud

Sign up in the Activity Office and let us know what you will be bringing to share.

BYOS & BYOB

Lemonade and coffee will be provided. There will also be a 50/50 raffle.

If you have any questions, please contact Roderick & Katherine Pingree at lot 209, Tel: 802-773-8767.



SHUTTLES

We have some awesome shuttles coming up in March and are happy to take you there and home again with no hassle for parking! Sign up in the Activity Office.

Friday, March 4: Mural Tour with Sue Martin

Monday, March 7: Trail Dust Jeep Adventures

Wednesday March 9: Birdwatching

Friday, March 11: Tucson Botanical Gardens Butterfly Exhibit

Sunday, March 13: Tucson Festival of Books

Wednesday, March 16: Mt. Lemmon

Friday, March 18: Degrazia Museum

Sunday, March 20: Broadway in Tucson presents, *The Jersey Boys*

Wednesday, March 23: Tohona Chul Park

Friday, March 25: Beer Shuttle

Sunday, March 27: Oro Valley Spring Artisans Market

We are so lucky to have the Rincon Country shuttle bus and love offering different adventures for you throughout the season.

All shuttle trips have a \$5.00 shuttle fee. If traveling over 100 miles round trip, there is a \$15.00 shuttle fee. Please note, you can only sign up yourself and partner/guest per shuttle. You cannot sign up additional residents.

Only residents of Rincon Country can ride the shuttle at this time. Masks are required.



Get Your Tickets Starting Thursday, Feb 24!

We have some awesome events coming soon and want to make sure that you know all about the fun!

March 10: *Sawmill Spud Out Dinner*

March 11: *An Evening with Mindy Ronstadt*

March 12: *Astronomy Club presents an Evening with the Thompsons*

March 13: *Shuffleboard Second Sundae Ice Cream Social*

March 17: *Design Team St. Patrick's Day Dinner*

March 18: *The Alley Cats Performance*

March 25: *"Oh, the Places You've Been" themed dance with Hardscrabble Road Band.*

Come to the Activity Office for your tickets or see club members if the event is a club sponsored event.

The Bulletin Board

Bulky Item Pickup!



Please sign up in the front office for this service. It will cost \$25.00 for the pick up. We will have this service the first Thursday of every month during the season. Please do not leave large items out by the dumpsters or throw items over the fence into the wash.



I'm OK

The "I'm Okay Club" is a program for guests and residents who are living alone. This is a daily check-in by phone that allows us to make sure you are OK. Please stop by the Activity Office to sign up. We look forward to seeing you.



AED Device

We have one Automated External Defibrillator (AED) device. The device is located in the Breeze-way near the Office.



Safety from Wildlife

The weather is cooling and this is a time when rattlesnakes might seek the warmth of a cozy asphalt street after sundown. For maximum safety carry a flashlight when you are walking at night, keep pets on a leash, and remain alert to an unlikely, but possible, encounter.



All dental procedures are performed by
a specialist in the area



Powerful Smile Waiting For You!

Chat with us
☎ (520) 216-8168

*3D Scan Diagnosis &
CAD-CAM Technology

*Digital Dentistry
& Top Brands



*All the Technology For a
Perfect Placement Of
Implants!*



We accept most dental insurances

Call us and check your insurance coverage in Mexico without cost.



Oral Rehabilitation

Dental Implants

Periodontal Treatment

Gum Surgery

Scaling and Root Planning

Shuttle Service!

Ask us about **FREE**
Transportation from **Tucson,**
Green Valley & Sahuarita

***May Apply Restrictions

straumann Dental Implant
\$800

*Ask about the price of the different
rehabilitation procedures according to
your need.

**Zirconia, e-max, Porcelain Metal,
Full Denture & All-On-4**

***VALID UNTIL APRIL 30TH, 2022. Cash only, Please bring coupon to receive
this offer. Not valid any other offers.



Contact Us At

USA (520) 208-6001 / (520) 223-4332

Mex.+52 (631) 312-8746

We are located half-block from the border!

Pesqueira #40-C Fundo Legal, 84030, Nogales, Sonora, Mexico

smiledentalnogales.com

Follow Us    
SmileDentalNogales